


Institut za javno zdravlje Srbije "Dr Milan Jovanović - Batut"
Institute of Public Health of Serbia " Dr Milan Jovanović - Batut"

Odeljenje za prevenciju i kontrolu nezaraznih bolesti
Department for Prevention and Control of Noncommunicable Diseases



**INCIDENCIJA I MORTALITET OD RAKA
U CENTRALNOJ SRBIJI**
**CANCER INCIDENCE AND MORTALITY
IN CENTRAL SERBIA**
2008

REGISTAR ZA RAK U CENTRALNOJ SRBIJI
CANCER REGISTRY OF CENTRAL SERBIA



ISBN 86-7358-030-7
IZVEŠTAJ BR. 10
REPORT No. 10
Beograd, 2010.

Institut za javno zdravlje Srbije “Dr Milan Jovanović - Batut”
Institute of Public Health of Serbia “ Dr Milan Jovanović - Batut”

Odeljenje za prevenciju i kontrolu nezaraznih bolesti
Department for Prevention and Control of Noncommunicable Diseases



INCIDENCIJA I MORTALITET OD RAKA U CENTRALNOJ SRBIJI

**CANCER INCIDENCE AND MORTALITY
IN CENTRAL SERBIA**

2008

REGISTAR ZA RAK U CENTRALNOJ SRBIJI
CANCER REGISTRY OF CENTRAL SERBIA



ISBN 86-7358-030-7

IZVEŠTAJ BR. 10
REPORT No. 10

Beograd, 2010.

Izdavač

Institut za javno zdravlje Srbije “Dr Milan Jovanović - Batut”

Published by

Institute of Public Health of Serbia “ Dr Milan Jovanović - Batut ”

Direktor**Director**

Prim. dr sc. Tanja Knežević / *Tanja Knezevic, MD, PhD*

Odeljenje za prevenciju i kontrolu nezaraznih bolesti**Department for Prevention and Control of Noncommunicable Diseases**

Mr sc. dr Dragan Miljuš / *Dragan Miljus, MD, M. Sc. - Head of Department*

Dr Snežana Živković / *Snezana Zivkovic, MD*

Sanja Savković, inženjer statistike / *Sanja Savkovic, statistics engineer*

Zorica Božić, viši dijetetski nutricionista / *Zorica Bozic, senior dietitian nutritionist*

Uređivački odbor**Editorial Board**

Mr sc. dr Dragan Miljuš / *Dragan Miljus, MD, M. Sc.*

Dr Snežana Živković / *Snezana Zivkovic, MD*

Dizajn i priprema za štampu**Design and typesetting**

Mr sc. dr Dragan Miljuš / *Dragan Miljus, MD, M. Sc.*

Dr Snežana Živković / *Snezana Zivkovic, MD*

Zorica Božić, viši dijetetski nutricionista / *Zorica Bozic, senior dietitian nutritionist*

Lektor**Language editor**

Mr Tamara Gruden / *Mr Tamara Gruden*

Korespondencija**Correspondence to**

Mr sc. dr Dragan Miljuš / *Dragan Miljus, MD, M. Sc.*

Dr Snežana Živković / *Snezana Zivkovic, MD*

Institut za javno zdravlje Srbije

Dr Subotića 5, 11 000 Beograd, Srbija

Tel: +381 (011) 2684 566/160, 115

Fax: +381 (011) 2684 140

E-mail: nezaraznibatut@yahoo.com

Web site://www.batut.org.rs

SADRŽAJ / CONTENTS

Uvod i objašnjenja

Introduction and Comments

Tabele i slike / Tables and Figures

1. Broj stanovnika prema uzrastu i polu, centralna Srbija, 2008. godina
Population of Central Serbia by age and sex, 2008
2. Broj stanovnika prema okruzima i polu, centralna Srbiji, 2008. godina
Population of Central Serbia by administrative regions by sex, 2008
3. Stanovništvo prema uzrastu i polu, centralna Srbija, popis 2002. i 2008. godine
Population of Central Serbia by age sex, census 2002 and estimate 2008
4. Broj novoobolelih osoba od raka prema polu, centralna Srbija, 1990 - 2008.
Number of new cancer cases by sex, Central Serbia, 1990 - 2008
5. Broj umrlih osoba od raka prema polu, centralna Srbija, 1990 - 2008.
Number of death cancer cases by sex, Central Serbia, 1990 - 2008
6. Standardizovana incidencija i mortalitet od raka na 100.000 stanovnika, centralna Srbija, 1990 – 2008godina
Standardized cancer incidence and mortality rates per 100.000 population, Central Serbia, 1990 – 2008
7. Standardizovane stope mortaliteta od vodećih lokalizacija raka na 100.000 stanovnika, muškarci, centralna Srbija, 1990 - 2008god.
Standardized cancer mortality rates per 100.000 population, males, Central Serbia, 1990 - 2008
8. Standardizovane stope mortaliteta od vodećih lokalizacija raka na 100.000 stanovnika, žene, centralna Srbija, 1990 - 2008god.
Standardized cancer mortality rates per 100.000 population, females, Central Serbia, 1990 - 2008
9. Vodeće lokalizacije u obolevanju od raka prema polu, centralna Srbija, 2008 godina
The leading cancer sites by sex, Central Serbia, 2008
10. Vodeće lokalizacije u umiranju od raka prema polu, centralna Srbija, 2008 godina
Deaths for leading cancer sites by sex, Central Serbia, 2008
11. Broj novoobolelih slučajeva od raka prema vodećim lokalizacijama, okruzima i polu, centralna Srbija, 2008 godina
Number of new cancer cases by sex and leading primary sites, Central Serbia, 2008
12. Sirove stope incidencije od raka prema vodećim lokalizacijama, okruzima i polu, centralna Srbija, 2008 godina
Crude cancer incidence rates by sex and leading primary sites, Central Serbia, 2008

13. Standardizovane stope incidencije od raka prema vodećim lokalizacijama okruzima i polu, centralna Srbija, 2008 godina
Standardized cancer incidence rates by sex and leading primary sites, Central Serbia, 2008
14. Broj umrlih slučajeva od raka prema vodećim lokalizacijama, okruzima i polu, centralna Srbija, 2008 godina
Number of death cancer cases by sex and leading primary sites, Central Serbia, 2008
15. Sirove stope mortaliteta od raka prema vodećim lokalizacijama, okruzima i polu, centralna Srbija, 2008 godina
Crude cancer mortality rates by sex and leading primary sites, Central Serbia, 2008
16. Standardizovane stope mortaliteta od raka prema vodećim lokalizacijama, okruzima i polu, centralna Srbija, 2008 godina
Standardized cancer mortality rates by sex and leading primary sites, Central Serbia, 2008
17. Ukupan broj novoobolelih i broj novoobolelih od raka sa procentom registrovanih samo na osnovu prijave smrti, prema primarnoj lokalizaciji i polu, centralna Srbija, 2008 godina
Total number of new cancer cases and number and percentage of cases registered from death certificates only, of corpus uteri, Central Serbia, 2008
18. Broj novoobolelih slučajeva od raka, prema primarnoj lokalizaciji, uzrastu i polu, centralna Srbija, 2008 godina
Number of new cancer cases by primary site, age and sex, Central Serbia, 2008
19. Sirove i standardizovane stope incidencije od raka na 100 000 stanovnika, prema primarnoj lokalizaciji, uzrastu i polu, centralna Srbija, 2008 godina
Crude and standardized cancer incidence rates per 100 000 population by primary site, age and sex, Central Serbia, 2008
20. Broj umrlih slučajeva od raka, prema primarnoj lokalizaciji, uzrastu i polu, centralna Srbija, 2008 godina
Number of death cancer cases by primary site, age and sex, Central Serbia, 2008
21. Sirove i standardizovane stope mortaliteta od raka na 100 000 stanovnika, prema primarnoj lokalizaciji, uzrastu i polu, centralna Srbija, 2008 godina
Crude and standardized cancer mortality rates per 100 000 population by primary site, age and sex, Central Serbia, 2008
22. Ukupan broj novoobolelih, broj i procenat histološki i citološki verifikovanih slučajeva raka prema primarnoj lokalizaciji i polu, centralna Srbija, 2008 godina
Total number of new cancer cases, number and percentage of histologically and cytologically confirmed cancer cases, by primary site and sex, Central Serbia, 2008

23. Broj novoobolelih i incidencija od raka prema primarnoj lokalizaciji, uzrastu i polu, centralna Srbija, 2008 godina
Number of new cancer cases and cancer incidence rates by primary site, age and sex, Central Serbia, 2008
24. Broj umrlih i mortalitet od raka prema primarnoj lokalizaciji, uzrastu i polu, centralna Srbija, 2008 godina
Number of death cancer cases and cancer mortality rates by primary site, age and sex, Central Serbia, 2008

UVOD

Populacioni registar za rak osnovan je u Srbiji 1970. godine na osnovu Plana statističkih istraživanja od interesa za Republiku (Sl. glasnik SRS br. 32/69).

U cilju primene jedinstvene metodologije u vođenju Registra u svim teritorijalnim jedinicama bivše Jugoslavije, 1986. godine doneti su Uputstvo o načinu i postupku prijavljivanja lica obolelih od malignih neoplazmi (Sl. list SFRJ, br. 3/86) i Pravilnik o obrascu Registra i načinu njegovog vođenja, obrascu prijave i postupku prijavljivanja i odjavljivanja određenih bolesti (Sl. glasnik SRS, br. 42/86).

Neprecizno uputstvo, nedovoljna edukacija zdravstvenih radnika, kao i nedostatak informatičke podrške imali su za posledicu subregistraciju novootkrivenih slučajeva raka, kao i relativno loš kvalitet podataka na samoj prijavi. U periodu od 1986. do 1995. godine, broj obolelih slučajeva malignih tumora koji su prijavljeni Registru bio je približno isti ili čak i manji od broja umrlih od raka.

Polazeći od zakonske obaveze i uloge Registra (pre svega, za procenu opterećenosti društva rakom, donošenje programa primarne prevencije, planiranje onkološke zdravstvene zaštite, kao i za klinička i epidemiološka istraživanja), u toku 1996. godine pristupljeno je njegovoj reorganizaciji u skladu sa preporukama Internacionalne (International Agency for Research on Cancer - IACR) i Evropske (European Network of Cancer Registries - ENCR) asocijacije registara za rak.

Reorganizacija je obuhvatala:

- decentralizaciju (registri se vode na nivou okruga, a baza podataka za centralnu Srbiju se nalazi u Institutu za javno zdravlje Srbije),
- pored pasivnog i aktivni način prikupljanja podataka,
- nove izvore informacija,
- edukaciju zdravstvenih radnika,
- informatičku podršku i
- povratni sistem informacija.

Zahvaljujući uspešnoj reorganizaciji, u toku 1998. godine Registar za rak u centralnoj Srbiji je primljen u Internacionalnu (IACR) i Evropsku asocijaciju registara za rak (ENCR).

Posle navedenih aktivnosti i vremenskog perioda od nekoliko godina, koji je neophodan za stabilnost podataka, ostvareni su uslovi za izradu prvog izveštaja u decembru 2002. godine.

U registrima koji funkcionišu više decenija, zbog mnogobrojnih izvora podataka i potrebe za njihovom proverom i analizom, uobičajeni vremenski period za prikupljanje podataka iznosi dve godine posle čega se publikuje izveštaj.

INTRODUCTION

The Population Register for Cancer was formed in Serbia in 1970, originated from the Plan of Statistical Research of Interest for the Republic (Official Gazette of the Republic of Serbia No. 32/69).

In 1986, aiming to apply a unified Register implementation methodology in all territorial units of Former Yugoslavia, the Guidelines On Ways And Procedures Of Reporting Persons With Malign Neoplasms (Official Gazette SFRY, No. 3/86) and the Regulation Book For The Register Form And The Method Of Updating, The Report Forms And Reporting And Cancelation Procedures For Certain Diseases (Official Gazette Gazette of the Republic of Serbia No. 42/86) were adopted.

Unprecise Guidelines, insufficient education of the medical personnel, as well as the lack of informatics support resulted in the subregistration of newly found cases of cancer, as well as a relatively poor quality of data on the report forms themselves. In the period of 1986 - 1995, the number of cases with malignant tumors reported to the Register was approximately the same or even lower compared to the number of cases deceased from cancer.

Starting from legal obligations and role of the Register, (foremost for the evaluation of the cancer burden on society, adoption of primary prevention programs, planning oncology health care, as well as clinical and epidemiological research), the reorganization of the Register began in 1996, in accordance with the recommendations of the Interational Agency for Research on Cancer - IACR, and European Network of Cancer Registries - ENCR.

The reorganization encompassed:

- Decentralization (registers are formed on the level of regions, while the main database for Central Serbia is located in the Institute of Public Health of Serbia),
- Apart from passive, active data collection,
- New sources of information,
- Education of medical personnel,
- Informatics support and
- Feedback system of information.

During 1998, due to a successful reorganization, the Cancer Register in Central Serbia was admitted into the Interational Agency for Research on Cancer (IACR) and European Network of Cancer Registries (ENCR).

Following the afore-mentioned activities and several years period necessary for achieving stability of the data, conditions were created for issuing the first Report in December 2002.

In Registers functioning over a period of several decades, due to numerous data sources and the need to check and analyze them, the usual time span for data collection is two years, after which the Report is published.

METOD

Registar za rak u centralnoj Srbiji obuhvata podatke o: ličnim karakteristikama obolelih/umrlih, mogućoj pojavi multiplog primarnog tumora, datumu utvrđivanja sadašnjeg oboljenja, načinu dijagnostike, karakteristikama tumora (primarna i sekundarna anatomska lokalizacija, histološki tip, stadijum), ishodu bolesti, kao i podatke o zdravstvenoj ustanovi koja je prijavila maligni tumor.

Izvori informacija o obolelim/umrlim od raka su podaci iz instituta za onkologiju, onkoloških dispanzera, onkoloških klinika, bolničkih i vanbolničkih zdravstvenih ustanova, patohistoloških/citoloških, hematoloških i drugih laboratorija, prijava smrti, fondova zdravstvenog osiguranja i ciljanih istraživanja.

Informatičku podršku Registru pružio je programski paket CanReg4 (Department of Descriptive Epidemiology, IARC, Lyon, France, 2002).

U cilju obezbeđenja kvalitetnog prikupljanja, unosa, čuvanja, obrade i analize podataka u Registru, primenjena je metodologija međunarodnih asocijacija (IARC i ENCR) registara za rak.

Za analizu umiranja od malignih tumora u centralnoj Srbiji u 2008 godini, korišćeni su nepublikovani podaci Republičkog zavoda za statistiku. Izvor podataka o populaciji bila je procena stanovništva za 2008 godinu Republičkog zavoda za statistiku.

Maligni tumori su šifrirani prema Međunarodnoj klasifikaciji bolesti - deseta revizija, knjiga 1- (šifre C00-C96) i prema Međunarodnoj klasifikaciji onkoloških bolesti - drugo izdanje (šifre 8000/3-9941/3) - International Classification of Diseases for Oncology - Third Edition, World Health Organization, 2000, Geneva. Registrom nisu obuhvaćeni tumori "in situ" (šifre D00-D09).

U izveštaju pored nestandardizovanih, prikazane su i standardizovane stope incidencije (tabele 6, 13, 19, 23) i mortaliteta (tabele 7, 16, 21, 24). Navedene stope standardizovane su metodom direktne standardizacije, a kao standardna populacija korišćena je populacija sveta (ASR-W), Evrope (ASR-E) i trankova (ASR-TRUNC).

Učešće prijavljenih slučajeva malignih tumora koji su registrovani samo na osnovu prijave smrti (tabela 17).

METHOD

The Central Serbia Cancer Register includes the following data: personal characteristics of new cases/deceased, possible appearance of multiple primary tumors, date of determination of current illness, diagnostic methods, tumor characteristics (primary and secondary anatomy localization, histology type, stage), outcome of the disease, as well as data on the health institution reporting the malign tumor.

Information sources concerning new cancer cases/deceased cases are data from the oncology institutes, oncology dispensaries, oncology clinics, hospitals and out-patients health institutions, pathology/cytology, hematology and other laboratories, death reports, health insurance funds and targeted research.

The Register is informatically supported by the CanReg4 program package (Department of Descriptive Epidemiology, IARC, Lyon, France, 2002).

With the aim of providing quality in collection, entry, keeping, processing and analysis of data in the Register, the methodology of international associations was applied (IARC I ENCR) for cancer registers.

Unpublished data of the Republic Statistics Institute were used for the analysis of death due to malign tumors in Central Serbia in 2008

The source of data concerning the population was the 2008 estimate of the Republic Statistics Institute.

Malign tumors are coded according to the International Classification of Diseases - Tenth Revision, Volume 1 (codes C00-C96) and according to the International Classification of Diseases for Oncology - Third Edition (codes 8000/3-9941/3), World Health Organization, 2000, Geneva. The Register does not include tumors "in situ" (codes D00-D09).

Apart from crude rates, the Report includes standardized incidence rates (tables 6, 13, 19, 23) and mortality rates (tables 7, 16, 21, 24). These rates were standardized by the method of direct standardization, with the World (ASR-W), European (ASR-E) or truncated (ASR-TRUNC) population as the standard population.

The percentage of new malign tumor cases registered only on the basis of death reports (table 17).

DEFINICIJE

Incidencija je broj novodijagnostikovanih slučajeva raka u definisanoj populaciji, prijavljenih registru u datoj kalendarskoj godini.

Uzrasno specifična stopa incidencije je broj novoobolelih od raka u definisanoj uzrasnoj grupi (najčešće petogodišnji interval) na 100.000 stanovnika te uzrasne grupe.

Mortalitet je broj slučajeva umrlih od raka koji se javljaju u definisanoj populaciji tokom određenog vremenskog perioda.

Uzrasno specifična stopa mortaliteta je broj umrlih od raka u definisanoj uzrasnoj grupi (najčešće petogodišnji interval) na 100.000 stanovnika te uzrasne grupe.

Standardizovane stope incidencije i mortaliteta predstavljaju fiktivne vrednosti koje se dobijaju određenim tehničkim postupkom, uvođenjem standardne populacije, obično je to: populacija sveta (ASR-W), Evrope (ASR-E) ili tranka (ASR-TRUNC). Njima se prevazilaze razlike (najčešće po polu i uzrastu) koje postoje u različitim populacijama, tako da su pogodne za poređenja.

DEFINITIONS

Incidence is the number of newly diagnosed cancer cases in a defined population, reported to the Register in the given calendar year.

The age-specific incidence rate is the number of new cancer cases in a defined age-group (usually five-year interval) per 100 000 population of that age group.

Mortality is the number of cases deceased from cancer appearing in a defined population during a determined period of time.

The age-specific mortality rate is the number of deceased from cancer in a defined age-group (usually five-year interval) per 100 000 population of that age group.

Standardized incidence and mortality rates represent fictive values reached by a certain technique, introducing standard population: usually World (ASR-W), European (ASR-E) or truncated population (ASR-TRUNC). They are used to eliminate differences (mostly gender and age) existing in different populations and are, therefore, convenient for comparison.

- *Instituta za javno zdravlje u Nišu i Kragujevcu;*
- *Zavoda za javno zdravlje na teritoriji centralne Srbije;*
- *Hospitalnog Registra za rak Instituta za onkologiju i radiologiju Srbije;*
- *Instituta kliničkog centra Srbije i kliničkog centra u Nišu;*
- *Kliničko bolničkih centara u Beogradu i Kragujevcu;*
- *Instituta za zdravstvenu zaštitu majke i deteta "Dr Vukan Čupić";*
- *Univerzitetske dečije klinike u Beogradu;*
- *Ginekološko akušerske klinike "Narodni front";*
- *Zdravstvenih centara;*
- *Specijalnih / opštih bolnica, i*
- *Domova zdravlja na teritoriji centralne Srbije.*

Health experts and administrative staff from the following institutions participated in the realization of this Report:

- *Institutes of Public Health of Nis and Kragujevac;*
- *Institutes of Public Health on the territory of Central Serbia;*
- *Hospital Cancer Register of the Oncology and Radiology Institute of Serbia;*
- *Institutes of the Clinical Centre of Serbia and the Clinical Centre of Nis;*
- *Clinical-Hospital Centres in Belgrade and Kragujevac;*
- *Institute for Health Care of Mother and Child "Dr Vukan Čupić";*
- *University Childrens' Clinic in Belgrade;*
- *Gyneacology and Obstretics Clinic "Narodni front";*
- *Health Centres;*
- *Special / General Hospitals and*
- *Primary Health Centres on the territory of Central Serbia.*

Koordinatori okružnih Registara za rak / *Coordinators of Cancer Registries:*

Zavod za javno zdravlje Šabac / *Institute of Public Health Sabac*

Dr Olivera Stojanović, specijalista socijalne medicine / *Olivera Stojanovic, MD, specialist specialist in social medicine*

Vesna Maksimović, viši sanitarni tehničar / *Vesna Maksimovic, senior sanitary technician*

Zavod za javno zdravlje Valjevo / *Institute of Public Health Valjevo*

Marija Jovanović, medicinska sestra / *Marija Jovanovic, nurse*

Zavod za javno zdravlje Požarevac / *Institute of Public Health Pozarevac*

Dr Goran Nikolić, specijalista epidemiologije / *Goran Nikolic, MD, specialist in epidemiology*

Srdan Klimek, viši sanitarni tehničar / *Srdjan Klimek, senior sanitary technician*

Nataša Peurača, dipl. biolog / *Natasa Peuraca, graduate biologist*

Institut za javno zdravlje Kragujevac / *Institute of Public Health Kragujevac*

Prof. dr Vesna Pantović, specijalista epidemiologije / *Prof. Vesna Pantovic, MD, PhD, specialist in epidemiology*

Ass. dr Gordana Đorđević, specijalista epidemiologije / *Ass. Prof. Gordana Djordjevic, MD, PhD, specialist in epidemiology*

Jelena Hadžić - Radisavljević, viši sanitarni tehničar / *Jelena Hadžic - Radisavljevic, senior sanitary technician*

Zavod za javno zdravlje Čuprija / *Institute of Public Health Cuprija*

Dr Vesna Stefanović, specijalista epidemiolog / *Vesna Stefanovic, MD, specialist in epidemiology*

Sonja Anđelković, viši sanitarni tehničar / *Sonja Anđelkovic, senior sanitary technician*

Zavod za javno zdravlje Zaječar / *Institute of Public Health Zajecar*

Dr Svetlana Živković, specijalista epidemiolog / *Svetlana Zivkovic, MD, specialist in epidemiology*

Nena Đorđević, operater / *Nena Đorđevic, IT technician*

Zavod za javno zdravlje Užice / *Institute of Public Health Uzice*

Dr sc med Biljana Mijović / *Biljana Mijović MD, PhD, specialist in epidemiology*

Dr Aleksandra Andrić, specijalista epidemiolog / *Aleksandra Andric, MD, specialist in epidemiology*

Marija Dulović, sanitarni tehničar / *Marija Dulovic, sanitary technician*

Zavod za javno zdravlje Čačak / *Institute of Public Health Cacak*

Dr Aksentije Tošić, specijalista epidemiolog / *Aksentije Tosic, MD, specialist in epidemiology*

Radoica Gojgić, dipl. inženjer metalurgije / *Radoica Gojgic, dipl. engineer of metallurgy*

Zavod za javno zdravlje Kraljevo / *Institute of Public Health Kraljevo*

Dr Vladan Šaponjić, specijalista epidemiolog / *Vladan Saponjic, MD, specialist in epidemiology*

Dr Verica Đukić, specijalista epidemiolog / *Verica Djukic, MD, specialist in epidemiology*

Zvonko Marinković, viši sanitarni tehničar / *Zvonko Marinkovic, senior sanitary technician*

Zavod za javno zdravlje Kruševac / *Institute of Public Health Krusevac*

Dr Mirjana Avramović, specijalista epidemiolog / *Mirjana Avramovic, MD, specialist in epidemiology*

Verica Mijailović, viši sanitarni tehničar / *Verica Mijailovic, senior sanitary technician*

Institut za javno zdravlje Niš / *Institute of Public Health Nis*

Dr Mirko Ilić, specijalista epidemiolog / *Mirko Ilic, MD, specialist in epidemiology*

Aleksandar Stojanović, viši sanitarni tehničar / *Aleksandar Stojanovic, senior sanitary technician*

Zavod za javno zdravlje Pirot / *Institute of Public Health Pirot*

Dr Radmila Zec, specijalista epidemiolog / *Radmila Zec, MD, specialist in epidemiology*

Sonja Petrov, viši sanitarni tehničar / *Sonja Petrov, senior sanitary technician*

Zavod za javno zdravlje Leskovac / *Institute of Public Health Leskovac*

Prim. dr sc. med. Miroslava Dimitrijević, specijalista socijalne medicine / *Prim. Miroslava Dimitrijevic, MD, PhD, specialist in social medicine*

Rosica Pejčić, viši sanitarni tehničar / *Rosica Pejčić, senior sanitary technician*

Zavod za javno zdravlje Vranje / *Institute of Public Health Vranje*

Dr Svetlana Stojanović, specijalista socijalne medicine / *Svetlana Stojadinovic, MD, specialist in social medicine*

Petar Veličković, zdravstveni statističar / *Petar Velickovic, health statistician*

Gradski zavod za javno zdravlje Beograd / *Institute of Public Health Beograd*

Mr sc. med. Ljubinka Marčetić, specijalista socijalne medicine / *Ljubinka Marcetic, MD, M. Sc. specialist in social medicine*

Dr Svetlana Trtica, specijalista socijalne medicine / *Svetlana Trtica, MD, specialist in social medicine*

Aleksandra Čukić, zdravstveni statističar / *Aleksandra Cukic, health statistician*

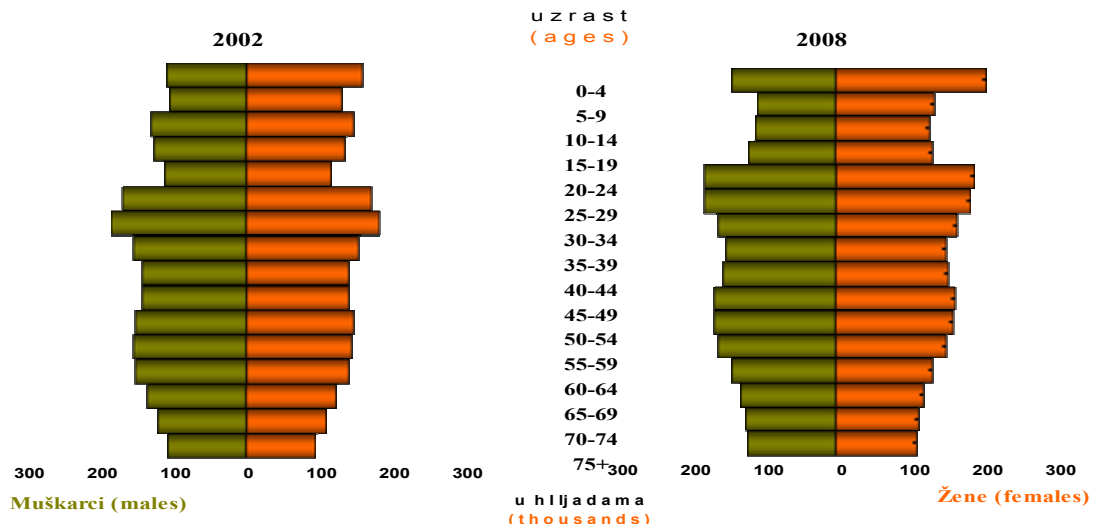
Tabela 1. Broj stanovnika prema uzrastu i polu, centralna Srbija, 2008*. godina
Table 1. Population of Central Serbia by age and sex, 2008*

Uzrast Age	Muškarci Males	Žene Females	Ukupno Total
0-4	136904	128643	265547
5-9	139029	132112	271141
10-14	146906	139342	286248
15-19	160770	153556	314326
20-24	180853	174456	355309
25-29	188037	183942	371979
30-34	188458	187858	376316
35-39	174786	177106	351892
40-44	169224	174657	343881
45-49	181135	188908	370043
50-54	202959	211678	414637
55-59	202390	216223	418613
60-64	134804	151628	286432
65-69	124141	148262	272403
70-74	121688	154460	276148
75+	159800	236118	395918
Ukupno (Total)	2611884	2758949	5370833

Tabela 2. Broj stanovnika prema okruzima i polu, centralna Srbija, 2008*. godina
Table 2. Population of Central Serbia by administrative districts by sex, 2008*

Teritorija District	Muškarci Males	Žene Females	Ukupno Total
Grad Beograd	765794	855602	1621396
Kolubarski	89709	92306	182015
Mačvanski	155339	158459	313798
Raški	147049	151395	298444
Moravički	106562	110415	216977
Zlatiborski	147946	151414	299360
Rasinski	120621	125901	246522
Šumadijski	142006	148800	290806
Pomoravski	105533	112529	218062
Braničevski	92555	99351	191906
Podunavski	100613	103829	204442
Zaječarski	61177	65040	126217
Borski	65734	68641	134375
Nišavski	184769	190684	375453
Pčinjski	114521	114183	228704
Jablanički	114626	114804	229430
Toplički	48181	47522	95703
Pirotski	49149	48074	97223
Centralna Srbija (Central Serbia)	2611884	2758949	5370833

Slika 1. Stanovništvo prema uzrastu i polu, centralna Srbija, 2002[†] i 2008*. godina
Figure 1. Population of Central Serbia by age and sex, 2002[†] and 2008*



† - Popis, 2002 - Republički zavod statistiku, Beograd, 2004
[†] - Census, 2002 - Republic statistical office, Belgrade, 2004
* - Procena, 2008 - Republički zavod za statistiku, Beograd 2009
* - Estimate, 2008 - Republic statistical office, Belgrade, 2009

Tabela 3. Broj novoobolelih osoba od raka prema polu, centralna Srbija, 1990 - 2008. godina
Table 3. Number of new cancer cases by sex, Central Serbia, 1990 - 2008

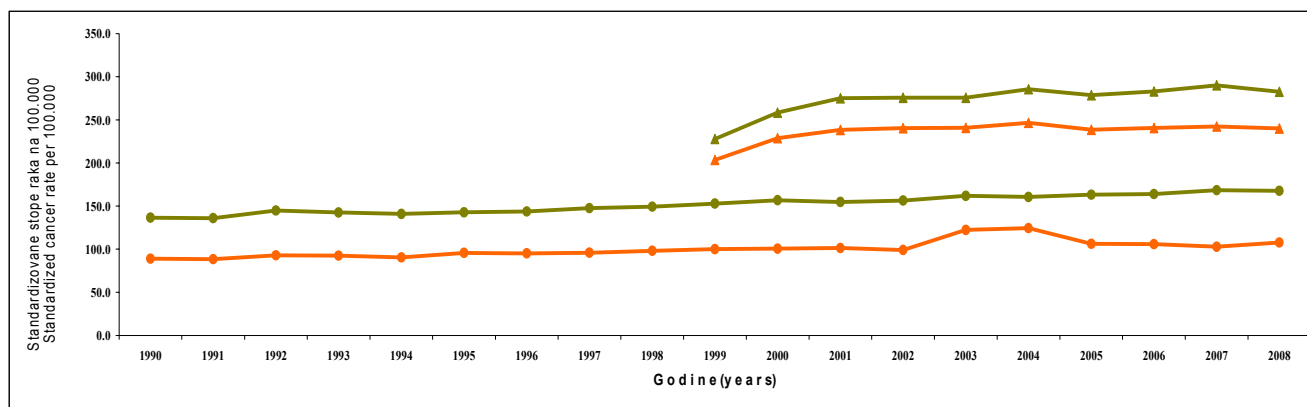
P o l (Sex)	G o d i n e (Years)																		
	1990*	1991*	1992*	1993*	1994*	1995*	1996*	1997*	1998*	1999	2000	2001	2002	2003	2004	2005	2006	2007	2008
Muškarci (Males)	4879	4479	4417	2900	2639	3101	8987	9412	9788	9964	11270	12110	12449	12350	12801	12679	12835	13475	13261
Žene (Females)	5019	4696	4174	3354	3250	3955	8236	8562	9053	9661	10853	11249	11449	11594	11954	11690	11758	12187	11974
Ukupno (Total)	9898	9175	8591	6254	5889	7056	17223	17974	18841	19625	22123	23359	23898	23944	24755	24369	24593	25662	25235

* subregistracija (subregistration)

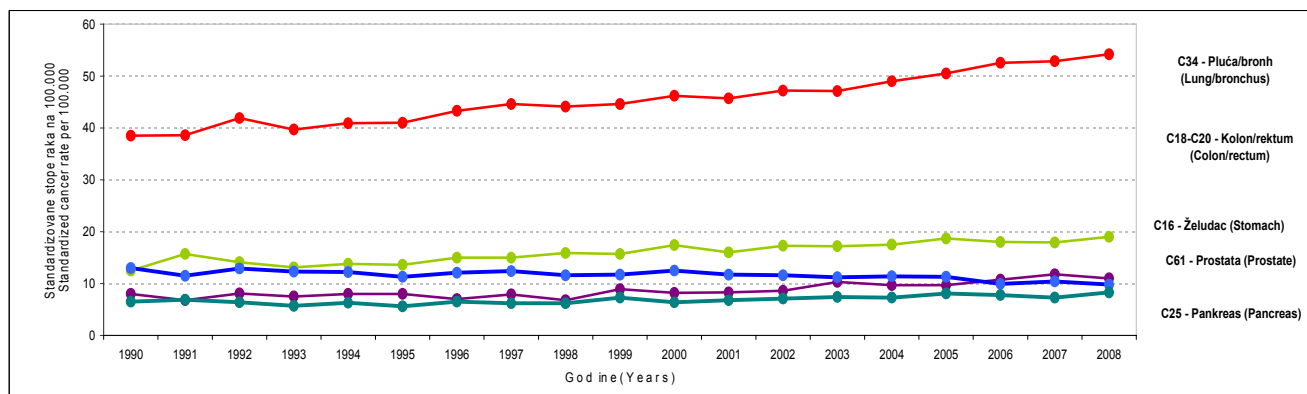
Tabela 4. Broj umrlih osoba od raka prema polu, centralna Srbija, 1990 - 2008. godina
Table 4. Number of death cancer cases by sex, Central Serbia, 1990 - 2008

P o l (Sex)	G o d i n e (Years)																		
	1990	1991	1992	1993	1994	1995	1996	1997	1998	1999	2000	2001	2002	2003	2004	2005	2006	2007	2008
Muškarci (Males)	5612	5658	6083	6093	6146	6287	6488	6736	6874	6962	7206	7149	7496	7655	7728	7858	7968	8290	8338
Žene (Females)	4202	4303	4544	4581	4569	4907	4919	5052	5288	5350	5447	5553	5571	5832	5980	6142	6146	6083	6317
Ukupno (Total)	9814	9961	10627	10674	10715	11194	11407	11788	12162	12312	12653	12702	13067	13487	13708	14000	14114	14373	14655

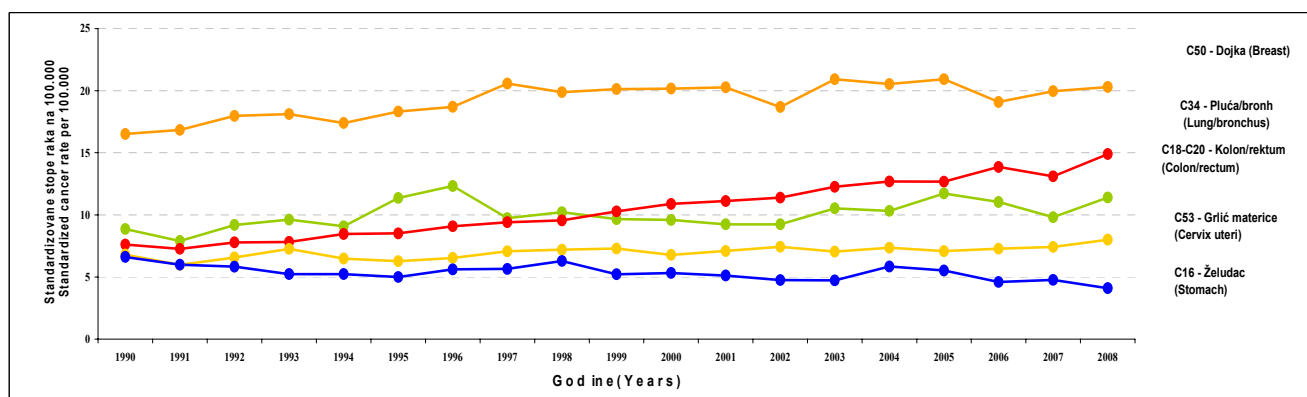
Slika 2. Standardizovana incidencija i mortalitet od raka na 100.000 stanovnika, centralna Srbija, 1990 - 2008. godina
Figure 2. Standardized cancer incidence and mortality rates per 100.000 population, Central Serbia, 1990 - 2008



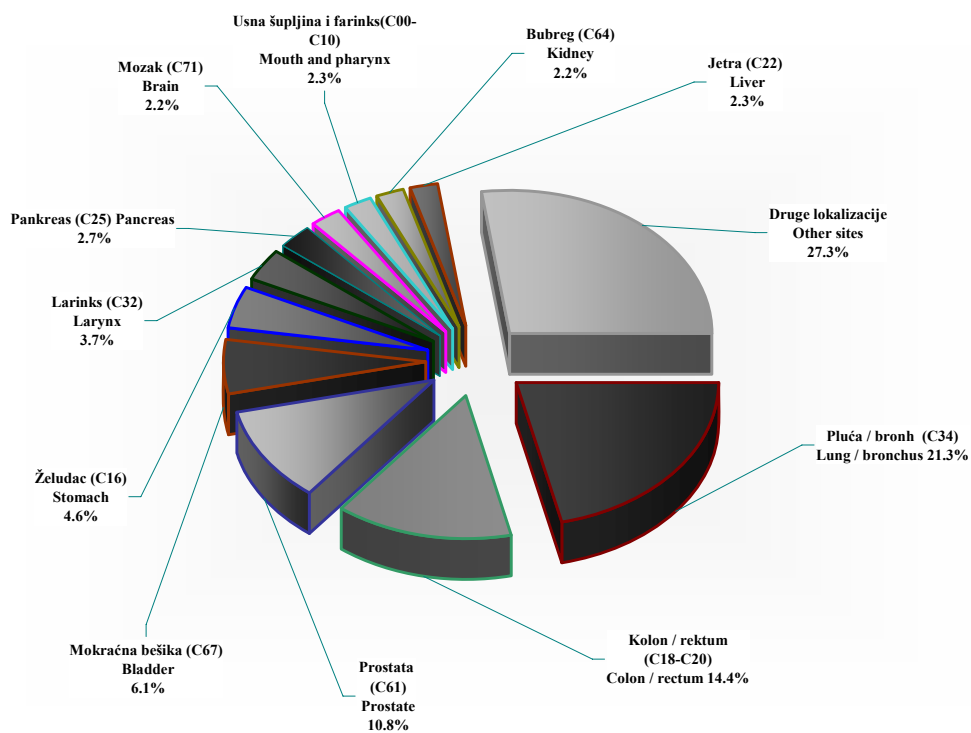
Slika 3. Standardizovane stope mortaliteta od vodećih lokalizacija raka na 100.000 stanovnika, muškarci, centralna Srbija, 1990-2008. god.
Figure 3. Standardized cancer mortality rates per 100.000 population, males, Central Serbia, 1990 - 2008



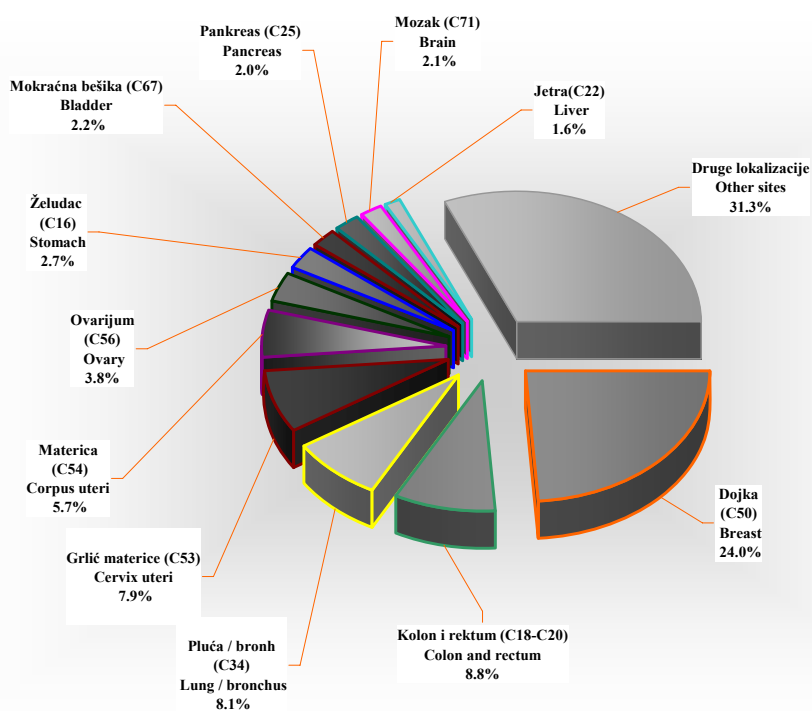
Slika 4. Standardizovane stope mortaliteta od vodećih lokalizacija raka na 100.000 stanovnika, žene, centralna Srbija, 1990 - 2008. god.
Figure 4. Standardized cancer mortality rates per 100.000 population, females, Central Serbia, 1990 - 2008



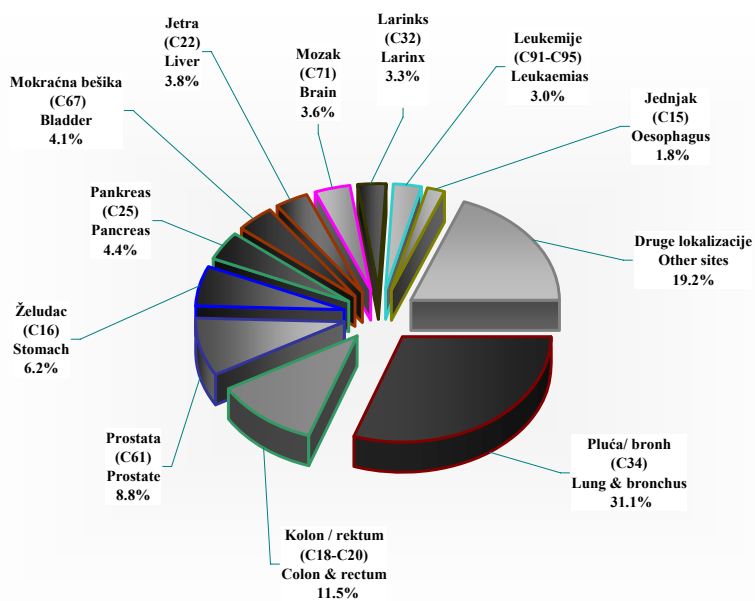
Slika 5. Vodeće lokalizacije u obolevanju od malignih tumora kod muškaraca, centralna Srbija, 2008. god.
Figure 5. The leading cancer sites in males, Central Serbia, 2008



Slika 6. Vodeće lokalizacije u obolevanju od malignih tumora kod žena, centralna Srbija, 2008. god.
Figure 6. The leading cancer sites in females, Central Serbia, 2008



Slika 7. Vodeće lokalizacije u umiranju od malignih tumora kod muškaraca, centralna Srbija, 2008. god.
Figure 7. The leading cancer sites, deaths, males in Central Serbia, 2008



Slika 8. Vodeće lokalizacije u umiranju od malignih tumora kod žena, centralna Srbija, 2008. god.
Figure 8. The leading cancer sites, deaths, females in Central Serbia, 2008

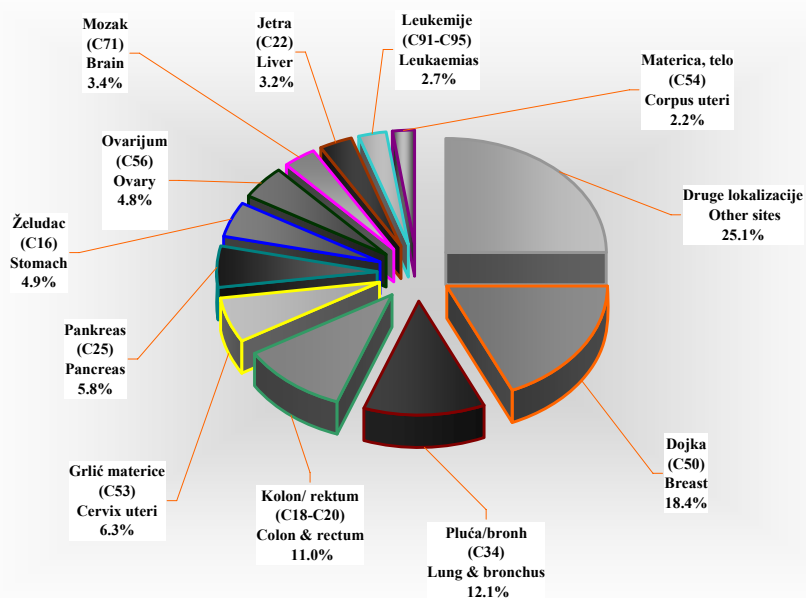


Tabela 5. Broj novoobolelih slučajeva od raka prema vodećim lokalizacijama i okruzima, muškarci, centralna Srbija, 2008. godina

Table 5. Number of new cancer cases by leading primary sites, males, regions in Central Serbia, 2008

Primarne lokalizacije (10-MKB) Primary sites (ICD-10)	centralna Srbija	O k r u g (R e g i o n)																	
		Grad Beograd	Kolubarski	Mačvanski	Raški	Moravički	Zlatiborski	Rasinski	Šumadijski	Pomoravski	Braničevski	Podunavski	Zajčarski	Borski	Nišavski	Pčinjki	Jablanički	Toplički	Pirotski
Pluća i bronh, (C34) Lung and bronchus	2821	859	127	177	113	130	179	153	151	76	93	118	83	59	207	110	99	43	44
Kolon i rektum (C18-C20) Colon and rectum	1907	778	66	103	63	67	65	54	115	73	52	27	66	55	136	45	70	25	47
Prostata (C61) Prostate	1432	489	49	72	62	58	53	56	86	53	42	53	52	30	106	36	77	17	41
Mokraćna bešika (C67) Bladder	804	249	28	36	42	40	34	53	52	34	30	33	19	23	73	20	19	7	12
Želudac (C16) Stomach	609	180	31	25	26	35	42	19	35	11	13	15	14	12	48	35	33	20	15
Larinks (C32) Larynx	490	156	15	32	26	18	28	23	36	14	17	20	6	7	38	15	24	8	7
Pankreas (C25) Pancreas	356	98	22	14	18	6	23	11	26	5	12	14	12	12	26	25	13	4	15
Usna šuplj. i farinks (C00-C10) Mouth and pharynx	334	94	11	27	13	17	17	15	15	10	7	11	7	11	31	11	24	4	9
Jetra (C22) Liver	305	86	14	17	25	4	9	3	13	3	23	13	7	5	32	13	18	4	16
Bubreg (C64) Kidney	292	110	10	11	10	20	18	6	19	4	9	19	5	4	21	6	14	4	2
Mozak (C71) Brain	289	75	10	17	19	10	9	9	27	4	17	14	8	12	12	8	20	3	15
Leukemije (C91-C95) Leukaemias	211	24	19	23	12	21	6	16	25	2	0	0	7	5	30	0	8	7	6
Druge lokalizacije Other sites	3411	1049	184	153	167	141	177	154	281	92	68	80	95	104	377	80	100	48	61
Sve lokalizacije (C00-C97) All sites	13261	4247	586	707	596	567	660	572	881	381	383	417	381	339	1137	404	519	194	290
Sve lokalizacije bez kože (C44) All sites but skin (C44)	11617	3654	488	629	521	485	591	479	776	357	369	395	347	293	928	384	480	183	258

Tabela 6. Broj novoobolelih slučajeva od raka prema vodećim lokalizacijama i okruzima, žene, centralna Srbija, 2008. godina

Table 6. Number of new cancer cases by leading primary sites, females, regions in Central Serbia, 2008

Primarne lokalizacije (10-MKB) Primary sites (ICD-10)	centralna Srbija	O k r u g (R e g i o n)																	
		Grad Beograd	Kolubarski	Mačvanski	Raški	Moravički	Zlatiborski	Rasinski	Šumadijski	Pomoravski	Braničevski	Podunavski	Zajčarski	Borski	Nišavski	Pčinjki	Jablanički	Toplički	Pirotski
Dojka (C50) Breast	2869	1161	81	145	126	118	152	116	175	93	57	61	60	71	200	67	103	32	51
Kolon i rektum (C18-C20) Colon and rectum	1049	317	32	73	44	46	52	39	52	41	37	43	45	29	93	38	23	18	27
Pluća i bronh (C34) Lung and bronchus	965	366	33	43	29	41	46	53	68	30	23	40	21	24	66	39	23	10	10
Grlić materice (C53) Cervix uteri	945	321	20	39	50	44	50	45	61	36	9	18	28	23	75	33	65	11	17
Materica (C54) Corpus uteri	678	231	25	27	29	21	15	46	34	22	12	13	13	16	66	14	66	12	16
Ovarijum (C56) Ovary	458	142	12	22	33	17	17	15	34	17	12	20	14	9	40	13	27	4	10
Želudac (C16) Stomach	329	73	15	25	19	12	20	13	24	5	10	11	9	7	31	24	14	5	12
Mokraćna bešika (C67) Bladder	266	94	3	13	8	16	17	12	13	12	10	7	5	7	27	4	10	3	5
Mozak (C71) Brain	247	64	15	17	25	4	12	6	19	5	6	16	3	4	22	5	8	4	12
Pankreas (C25) Pancreas	234	44	13	10	18	5	14	9	15	6	14	17	6	5	27	10	11	7	3
Jetra (C22) Liver	186	24	6	16	19	3	19	3	4	0	11	13	2	6	23	7	15	5	10
Leukemije (C91-C95) Leukaemias	117	16	6	8	6	11	2	4	17	2	0	1	3	7	8	0	7	3	3
Druge lokalizacije Other sites	3631	1170	179	192	209	136	230	146	307	76	96	81	109	102	308	59	113	53	78
Sve lokalizacije (C00-C97) All sites	11974	4023	440	630	615	474	646	507	823	345	297	341	318	310	986	313	485	167	254
Sve lokalizacije bez kože (C44) All sites but skin (C44)	10397	3415	357	550	530	399	556	429	722	327	276	317	278	261	849	301	455	152	223

Tabela 7. Stope incidencije od raka na 100.000 stanovnika prema vodećim lokalizacijama i okruzima, muškarci, centralna Srbija, 2008. godina

Table 7. Cancer incidence rates per 100.000 population by leading primary sites, males, regions in Central Serbia, 2008

Primarne lokalizacije (10-MKB) Primary sites (ICD-10)	centralna Srbija	O k r u g (R e g i o n)																	
		Grad Beograd	Kolubarski	Mačvanski	Raški	Moravički	Zlatiborski	Rasinski	Šumadijski	Pomoravski	Braničevski	Podunavski	Zaječarski	Borski	Nišavski	Pčinjski	Jablanički	Toplički	Pirotski
Pluća i bronh, (C34) Lung and bronchus	108.0	112.2	141.6	113.9	76.8	122.0	121.0	126.8	106.3	72.0	100.5	117.3	135.7	89.8	112.0	96.1	86.4	89.2	89.5
Kolon i rektum (C18-C20) Colon and rectum	73.0	101.6	73.6	66.3	42.8	62.9	43.9	44.8	81.0	69.2	56.2	26.8	107.9	83.7	73.6	39.3	61.1	51.9	95.6
Prostata (C61) Prostate	54.8	63.9	54.6	46.4	42.2	54.4	35.8	46.4	60.6	50.2	45.4	52.7	85.0	45.6	57.4	31.4	67.2	35.3	83.4
Mokraćna bešika (C67) Bladder	30.8	11.0	0.0	0.0	2.0	1.8	0.7	0.0	19.0	4.4	1.1	1.0	1.6	10.2	1.6	0.0	0.0	0.0	0.0
Želudac (C16) Stomach	23.3	23.5	34.6	16.1	17.7	32.8	28.4	15.8	24.6	10.4	14.0	14.9	22.9	18.3	26.0	30.6	28.8	41.5	30.5
Larinks (C32) Larynx	18.8	20.4	16.7	20.6	17.7	16.9	18.9	19.1	25.4	13.3	18.4	19.9	9.8	10.6	20.6	13.1	20.9	16.6	14.2
Pankreas (C25) Pancreas	13.6	12.8	24.5	9.0	12.2	5.6	15.5	9.1	18.3	4.7	13.0	13.9	19.6	18.3	14.1	21.8	11.3	8.3	30.5
Usna šuplj. i farinks (C00-C10) Mouth and pharynx	12.8	12.3	12.3	17.4	8.8	16.0	11.5	12.4	10.6	9.5	7.6	10.9	11.4	16.7	16.8	9.6	20.9	8.3	18.3
Jetra (C22) Liver	11.7	11.2	15.6	10.9	17.0	3.8	6.1	2.5	9.2	2.8	24.9	12.9	11.4	7.6	17.3	11.4	15.7	8.3	32.6
Bubreg (C64) Kidney	11.2	14.4	11.1	7.1	6.8	18.8	12.2	5.0	13.4	3.8	9.7	18.9	8.2	6.1	11.4	5.2	12.2	8.3	4.1
Mozak (C71) Brain	11.1	9.8	11.1	10.9	12.9	9.4	6.1	7.5	19.0	3.8	18.4	13.9	13.1	18.3	6.5	7.0	17.4	6.2	30.5
Leukemije (C91-C95) Leukaemias	8.1	3.1	21.2	14.8	8.2	19.7	4.1	13.3	17.6	1.9	0.0	0.0	11.4	7.6	16.2	0.0	7.0	14.5	12.2
Druge lokalizacije Other sites	130.6	158.5	236.3	121.7	140.1	168.0	141.9	171.6	215.5	115.0	104.8	111.3	184.7	183.0	241.9	87.3	103.8	114.2	148.5
Sve lokalizacije (C00-C97) All sites	507.7	554.6	653.2	455.1	405.3	532.1	446.1	474.2	620.4	361.0	413.8	414.5	622.8	515.7	615.4	352.8	452.8	402.6	590.0
Sve lokalizacije bez kože (C44) All sites but skin (C44)	444.8	477.2	544.0	404.9	354.3	455.1	399.5	397.1	546.5	338.3	398.7	392.6	567.2	445.7	502.2	335.3	418.8	379.8	524.9

Tabela 8. Stope incidencije od raka na 100.000 stanovnika prema vodećim lokalizacijama i okruzima, žene, centralna Srbija, 2008. godina

Table 8. Cancer incidence rates per 100.000 population by leading primary sites, females, regions in Central Serbia, 2008

Primarne lokalizacije (10-MKB) Primary sites (ICD-10)	centralna Srbija	O k r u g (R e g i o n)																	
		Grad Beograd	Kolubarski	Mačvanski	Raški	Moravički	Zlatiborski	Rasinski	Šumadijski	Pomoravski	Braničevski	Podunavski	Zaječarski	Borski	Nišavski	Pčinjski	Jablanički	Toplički	Pirotski
Dojka (C50) Breast	104.0	135.7	87.8	91.5	83.2	106.9	100.4	92.1	117.6	82.6	57.4	58.8	92.3	103.4	104.9	58.7	89.7	67.3	106.1
Kolon i rektum (C18-C20) Colon and rectum	38.0	37.0	34.7	46.1	29.1	41.7	34.3	31.0	34.9	36.4	37.2	41.4	69.2	42.2	48.8	33.3	20.0	37.9	56.2
Pluća i bronh (C34) Lung and bronchus	35.0	42.8	35.8	27.1	19.2	37.1	30.4	42.1	45.7	26.7	23.2	38.5	32.3	35.0	34.6	34.2	20.0	21.0	20.8
Grljić materice (C53) Cervix uteri	34.3	37.5	21.7	24.6	33.0	39.8	33.0	35.7	41.0	32.0	9.1	17.3	43.1	33.5	39.3	28.9	56.6	23.1	35.4
Materica (C54) Corpus uteri	24.6	27.0	27.1	17.0	19.2	19.0	9.9	36.5	22.8	19.6	12.1	12.5	20.0	23.3	34.6	12.3	57.5	25.3	33.3
Ovarijum (C56) Ovary	16.6	16.6	13.0	13.9	21.8	15.4	11.2	11.9	22.8	15.1	12.1	19.3	21.5	13.1	21.0	11.4	23.5	8.4	20.8
Želudac (C16) Stomach	11.9	8.5	16.3	15.8	12.5	10.9	13.2	10.3	16.1	4.4	10.1	10.6	13.8	10.2	16.3	21.0	12.2	10.5	25.0
Mokraćna bešika (C67) Bladder	9.6	11.0	3.3	8.2	5.3	14.5	11.2	9.5	8.7	10.7	10.1	6.7	7.7	10.2	14.2	3.5	8.7	6.3	10.4
Mozak (C71) Brain	9.0	7.5	16.3	10.7	16.5	3.6	7.9	4.8	12.8	4.4	6.0	15.4	4.6	5.8	11.5	4.4	7.0	8.4	25.0
Pankreas (C25) Pancreas	8.5	5.1	14.1	6.3	11.9	4.5	9.2	7.1	10.1	5.3	14.1	16.4	9.2	7.3	14.2	8.8	9.6	14.7	6.2
Jetra (C22) Liver	6.7	2.8	6.5	10.1	12.5	2.7	12.5	2.4	2.7	0.0	11.1	12.5	3.1	8.7	12.1	6.1	13.1	10.5	20.8
Leukemije (C91-C95) Leukaemias	4.2	1.9	6.5	6.3	4.6	10.0	1.3	5.6	12.8	1.8	0.0	1.0	6.2	10.2	5.2	0.0	6.1	10.5	6.2
Druge lokalizacije Other sites	131.6	136.7	193.9	119.9	137.4	123.2	151.9	113.6	205.0	67.5	96.6	78.0	166.1	148.6	160.5	51.7	98.4	107.3	162.2
Sve lokalizacije (C00-C97) All sites	434.0	470.2	476.7	397.6	406.2	429.3	426.6	402.7	553.1	306.6	298.9	328.4	488.9	451.6	517.1	274.1	422.5	351.4	528.4
Sve lokalizacije bez kože (C44) All sites but skin (C44)	376.8	399.1	386.8	347.1	350.1	361.4	367.2	340.7	485.2	290.6	277.8	305.3	427.4	380.2	445.2	263.6	396.3	319.9	463.9

Tabela 9. Standardizovane stope incidencije od raka na 100.000 stanovnika prema vodećim lokalizacijama i okruzima, muškarci, centralna Srbija, 2008. godina

Table 9. Standardized cancer incidence rates per 100.000 population by leading primary sites, males, regions in Central Serbia, 2008

Primarne lokalizacije (10-MKB) Primary sites (ICD-10)	centralna Srbija	O k r u g (R e g i o n)																	
		Grad Beograd	Kolubarski	Mačvanski	Raški	Moravički	Zlatiborski	Rasinski	Šumadijski	Pomoravski	Braničevski	Podunavski	Zaječarski	Borski	Nišavski	Pčinjski	Jablanički	Toplički	Pirotski
Pluća i bronh, (C34) Lung and bronchus	61.4	66.6	75.9	64.5	50.4	68.1	66.8	65.1	58.6	42.2	56.8	66.4	65.1	45.3	59.1	71.9	48.3	47.5	44.2
Kolon i rektum (C18-C20) Colon and rectum	39.5	57.8	37.0	37.0	27.2	31.6	21.8	23.9	43.0	34.1	28.9	14.9	48.2	44.1	34.9	28.7	31.7	27.4	44.0
Prostata (C61) Prostate	25.9	33.2	23.7	22.7	21.9	25.6	15.6	20.4	28.7	19.5	16.7	25.9	27.2	19.7	24.2	19.3	33.2	13.6	29.8
Mokraćna bešika (C67) Bladder	16.3	17.6	14.9	12.9	18.4	17.8	12.4	20.7	19.2	17.3	17.0	16.2	15.2	17.3	20.8	11.3	8.7	7.8	11.6
Želudac (C16) Stomach	12.5	13.4	14.9	9.1	10.9	18.0	14.9	9.2	13.6	5.0	5.6	7.8	7.6	8.3	12.1	21.0	14.4	23.0	15.1
Larinks (C32) Larynx	11.2	12.2	9.1	12.7	12.2	10.2	11.1	11.4	15.0	8.5	9.2	12.4	5.8	5.4	12.1	10.1	12.7	11.1	7.7
Pankreas (C25) Pancreas	7.3	7.2	12.7	5.3	7.4	3.6	8.0	4.4	10.0	2.8	8.2	7.6	8.1	9.1	6.8	13.7	5.8	5.0	13.5
Usna šuplj. i farinks (C00-C10) Mouth and pharynx	7.5	7.2	7.1	10.3	6.1	10.1	6.3	6.7	6.1	4.6	4.4	7.0	4.9	9.0	9.3	7.5	13.6	6.0	7.1
Jetra (C22) Liver	6.1	6.4	6.9	5.8	11.4	1.7	3.0	1.1	3.9	1.1	12.5	6.3	3.5	4.3	8.6	8.0	7.1	3.7	12.6
Bubreg (C64) Kidney	6.5	8.7	5.5	4.8	5.7	10.3	6.4	3.4	7.9	1.2	5.3	11.1	4.4	3.8	6.0	3.8	6.5	4.4	2.3
Mozak (C71) Brain	7.8	7.9	9.6	8.8	9.3	6.9	4.4	4.8	12.8	2.5	10.6	9.1	5.2	9.9	4.0	4.5	11.9	6.3	19.5
Leukemije (C91-C95) Leukaemias	5.0	2.3	14.2	10.7	6.1	10.3	2.3	7.8	10.1	0.5	0.0	0.0	7.8	5.4	8.5	0.0	3.4	8.1	6.0
Druge lokalizacije Other sites	75.5	81.1	103.4	61.7	79.8	73.0	64.8	69.0	115.9	45.8	42.0	49.2	77.6	91.0	108.6	51.2	51.9	64.3	55.8
Sve lokalizacije (C00-C97) All sites	282.5	321.6	334.9	266.47	266.9	287.2	237.8	247.8	344.8	185.0	217.1	234.0	280.6	272.4	315.2	251.1	249.5	228.2	269.3
Sve lokalizacije bez kože (C44) All sites but skin (C44)	252.2	280.0	282.1	246.8	245.4	252.9	219.8	218.5	310.5	176.7	209.4	222.2	257.4	236.9	260.8	239.5	233.2	214.7	246.4

Tabela 10. Standardizovane stope incidencije od raka na 100.000 stanovnika prema vodećim lokalizacijama i okruzima, žene, centralna Srbija, 2008. godina

Table 10. Standardized cancer incidence rates per 100.000 population by leading primary sites, females, regions in Central Serbia, 2008

Primarne lokalizacije (10-MKB) Primary sites (ICD-10)	centralna Srbija	O k r u g (R e g i o n)																	
		Grad Beograd	Kolubarski	Mačvanski	Raški	Moravički	Zlatiborski	Rasinski	Šumadijski	Pomoravski	Braničevski	Podunavski	Zaječarski	Borski	Nišavski	Pčinjski	Jablanički	Toplički	Pirotski
Dojka (C50) Breast	61.1	80.5	47.7	57.7	55.7	54.0	56.4	55.4	68.9	46.5	32.7	32.7	44.2	57.3	58.0	45.6	52.2	33.2	58.2
Kolon i rektum (C18-C20) Colon and rectum	18.3	17.8	15.1	24.7	16.8	21.1	16.3	15.8	16.3	15.3	15.3	18.6	27.9	19.6	22.2	19.7	10.9	17.5	27.0
Pluća i bronh (C34) Lung and bronchus	18.8	23.9	15.7	14.1	12.3	18.2	14.6	20.7	23.8	13.1	11.2	20.1	13.9	18.0	19.3	23.8	10.4	7.7	10.0
Grljić materice (C53) Cervix uteri	23.3	25.5	13.5	16.2	24.7	29.6	19.5	24.9	28.2	23.0	4.8	10.7	26.1	21.0	24.3	22.8	41.4	17.2	22.5
Materica (C54) Corpus uteri	13.7	14.5	14.3	10.4	11.7	10.5	5.9	19.8	11.8	10.4	5.0	7.4	9.0	11.4	19.0	9.6	36.4	12.6	17.9
Ovarijum (C56) Ovary	10.6	10.6	8.5	8.3	14.6	9.1	7.2	8.4	15.0	8.4	8.3	12.2	11.1	7.7	13.1	8.4	17.6	4.7	16.5
Želudac (C16) Stomach	5.7	4.5	6.0	6.9	6.9	5.5	7.6	6.0	8.0	2.4	4.5	4.1	4.6	4.8	6.2	11.8	5.0	5.5	10.1
Mokraćna bešika (C67) Bladder	4.6	5.4	1.3	4.2	3.1	5.3	4.5	5.3	4.3	4.5	4.2	3.0	2.5	4.2	7.0	2.6	3.7	2.3	4.1
Mozak (C71) Brain	5.9	5.0	8.0	9.0	10.5	3.7	4.6	2.7	8.3	2.1	3.9	10.2	8.8	2.5	8.3	4.2	4.4	4.2	15.0
Pankreas (C25) Pancreas	3.7	2.6	5.4	2.7	6.2	1.4	4.8	2.8	5.2	1.7	4.6	7.3	2.1	4.4	5.4	4.4	3.4	8.7	1.1
Jetra (C22) Liver	3.2	1.6	3.6	4.7	6.2	1.4	6.4	0.8	1.7	0.0	3.5	4.9	0.7	4.6	5.5	3.0	6.4	5.6	7.2
Leukemije (C91-C95) Leukaemias	2.7	1.4	2.3	3.7	2.8	5.2	0.5	2.3	9.4	1.0	0.0	0.6	2.8	7.1	2.8	0.0	6.0	6.6	2.9
Druge lokalizacije Other sites	68.7	72.1	89.6	71.8	84.6	59.8	76.5	55.7	108.0	35.8	43.2	40.3	68.3	76.7	80.5	33.1	57.6	66.9	79.5
Sve lokalizacije (C00-C97) All sites	240.1	265.3	231.2	234.3	256.1	224.8	224.9	220.4	309.0	164.2	141.5	172.1	221.9	239.5	271.6	188.9	255.4	192.7	272.0
Sve lokalizacije bez kože (C44) All sites but skin (C44)	215.0	232.6	192.2	218.9	222.8	196.0	194.8	201.2	275.7	159.5	133.6	160.8	200.2	211.4	240.5	182.4	241.4	178.9	246.8

Tabela 11. Broj umrlih slučajeva od raka prema vodećim lokalizacijama i okruzima, muškarci, centralna Srbija, 2008. godina

Table 11. Number of death cancer cases by leading primary sites, males, regions in Central Serbia, 2008

Primarne lokalizacije (10-MKB) Primary sites (ICD-10)	centralna Srbija	O k r u g (R e g i o n)																	
		Grad Beograd	Kolubarski	Mačvanski	Raški	Moravički	Zlatiborski	Rasinski	Šumadijski	Pomoravski	Braničevski	Podunavski	Zaječarski	Borski	Nišavski	Pčinjski	Jablanički	Toplički	Pirotski
Pluća i bronh, (C34) Lung and bronchus	2576	808	114	155	118	128	142	128	111	104	107	109	70	48	162	84	105	38	45
Kolon i rektum (C18-C20) Colon and rectum	995	355	35	55	40	56	34	57	55	43	32	25	24	19	75	23	29	14	24
Prostata (C61) Prostate	696	201	18	37	25	40	41	35	35	29	34	33	29	25	43	23	25	9	14
Želudac (C16) Stomach	506	148	14	37	23	18	29	26	26	16	17	18	13	5	41	30	26	9	10
Pankreas (C25) Pancreas	426	122	19	16	25	18	19	20	28	25	15	15	16	17	23	18	17	4	9
Mokraćna bešika (C67) Bladder	291	110	8	12	9	16	11	18	15	20	9	14	3	6	20	11	4	2	3
Jetra (C22) Liver	327	84	12	24	24	12	12	19	9	12	20	10	12	5	20	14	20	2	16
Larinks (C32) Larynx	267	62	8	18	8	12	13	16	25	10	11	13	5	7	22	15	15	5	2
Mozak (C71) Brain	255	87	5	9	20	15	5	14	16	11	11	10	4	6	10	7	17	4	4
Leukemije(C91-C95) Leukaemias	216	59	11	12	10	15	13	13	14	7	7	11	5	6	14	8	7	2	2
Bubreg(C64) Kidney	177	66	8	12	6	8	10	14	7	4	6	6	4	1	9	2	9	2	3
Jednjak(C15) Oesophagus	136	42	7	7	6	9	10	11	4	5	3	5	1	3	7	2	6	4	4
Druge lokalizacije Other sites	1470	474	56	66	67	67	72	90	84	63	57	56	35	29	117	34	57	25	21
Sve lokalizacije (C00-C97) All sites	8338	2618	315	460	381	414	411	461	429	349	329	325	221	177	563	271	337	120	157
Sve lokalizacije bez kože (C44) All sites but skin (C44)	8278	2606	312	456	380	409	409	453	428	348	325	322	219	175	559	269	332	119	157

Tabela 12. Broj umrlih slučajeva od raka prema vodećim lokalizacijama i okruzima, žene, centralna Srbija, 2008. godina

Table 12. Number of death cancer cases by leading primary sites, females, regions in Central Serbia, 2008

Primarne lokalizacije (10-MKB) Primary sites (ICD-10)	centralna Srbija	O k r u g (R e g i o n)																	
		Grad Beograd	Kolubarski	Mačvanski	Raški	Moravički	Zlatiborski	Rasinski	Šumadijski	Pomoravski	Braničevski	Podunavski	Zaječarski	Borski	Nišavski	Pčinjski	Jablanički	Toplički	Pirotski
Dojka (C50) Breast	1121	438	28	68	41	43	47	46	58	44	44	43	30	29	70	21	36	15	20
Pluća i bronh (C34) Lung and bronchus	829	330	24	46	36	29	38	35	45	39	22	43	21	10	45	24	21	10	11
Kolon i rektum (C18-C20) Colon and rectum	753	256	29	41	22	25	34	53	37	31	46	34	21	21	37	22	20	7	17
Grlić materice (C53) Cervix uteri	389	115	17	11	27	18	21	16	20	21	23	6	18	18	23	10	19	4	2
Pankreas (C25) Pancreas	354	125	12	14	23	15	12	18	13	15	15	16	5	7	28	8	12	6	10
Želudac (C16) Stomach	283	88	6	26	14	9	11	11	17	12	11	13	5	3	21	12	13	4	7
Ovarijum (C56) Ovary	282	86	10	19	12	15	12	10	22	14	8	20	5	3	17	6	11	5	7
Mozak (C71) Brain	210	86	9	8	17	9	9	12	7	7	6	9	3	3	11	2	3	2	7
Jetra (C22) Liver	203	49	7	17	18	6	16	9	13	4	7	6	4	4	18	3	8	4	10
Leukemije(C91-C95) Leukaemias	162	58	5	8	7	5	13	11	13	3	5	2	1	5	10	4	5	4	3
Bubreg(C64) Kidney	96	43	3	5	3	1	4	3	2	3	5	6	1	1	7	0	5	1	3
Mokraćna bešika (C67) Bladder	96	42	1	3	3	2	5	1	10	6	2	1	2	2	5	5	1	1	4
Druge lokalizacije Other sites	1539	502	44	84	66	59	82	77	79	60	58	56	44	38	135	30	77	18	30
Sve lokalizacije (C00-C97) All sites	6317	2218	195	350	289	236	304	302	336	259	252	255	160	144	427	147	231	81	131
Sve lokalizacije bez kože (C44) All sites but skin (C44)	6252	2207	195	349	286	233	297	301	333	258	247	251	158	142	420	145	220	79	131

Tabela 13. Stope mortaliteta od raka na 100.000 stanovnika prema vodećim lokalizacijama i okruzima, muškarci, centralna Srbija, 2008. godina

Table 13. Cancer mortality rates per 100.000 population by leading primary sites, males, regions in Central Serbia, 2008

Primarne lokalizacije (10-MKB) Primary sites (ICD-10)	O k r u g (R e g i o n)																		
	centralna Srbija	Grad Beograd	Kolubarski	Mačvanski	Raški	Moravički	Zlatiborski	Rasinski	Šumadijski	Pomoravski	Braničevski	Podunavski	Zajčarski	Borski	Nišavski	Pčinjki	Jablanički	Toplički	Pirotski
Pluća i bronh, (C34) Lung and bronchus	98.6	105.5	127.1	99.8	80.2	120.1	96.0	106.1	78.2	98.5	82.3	108.3	114.4	73.0	87.7	73.3	91.6	78.9	91.6
Kolon i rektum (C18-C20) Colon and rectum	38.1	46.4	39.0	35.4	27.2	52.6	23.0	47.3	38.7	40.7	26.7	24.8	39.2	28.9	40.6	20.1	25.3	29.1	48.8
Prostata (C61) Prostate	26.6	26.2	20.1	23.8	17.0	37.5	27.7	29.0	24.6	27.5	28.9	32.8	47.4	38.0	23.3	20.1	21.8	18.7	28.5
Želudac (C16) Stomach	19.4	19.3	15.6	23.8	15.6	16.9	19.6	21.6	18.3	15.2	22.4	17.9	21.2	7.6	22.2	26.2	22.7	18.7	20.3
Pankreas (C25) Pancreas	16.3	15.9	21.2	10.3	17.0	16.9	12.8	16.6	19.7	23.7	11.8	14.9	26.2	25.9	12.4	15.7	14.8	8.3	18.3
Mokraćna bešika (C67) Bladder	11.1	14.4	8.9	7.7	6.1	15.0	7.4	14.9	10.6	19.0	15.0	13.9	4.9	9.1	10.8	9.6	3.5	4.2	6.1
Jetra (C22) Liver	12.5	11.0	13.4	15.5	16.3	11.3	8.1	15.8	6.3	11.4	11.8	9.9	19.6	7.6	10.8	12.2	17.4	4.2	32.6
Larinks (C32) Larynx	10.2	8.1	8.9	11.6	5.4	11.3	8.8	13.3	17.6	9.5	9.6	12.9	8.2	10.6	11.9	13.1	13.1	10.4	4.1
Mozak (C71) Brain	9.8	11.4	5.6	5.8	13.6	14.1	3.4	11.6	11.3	10.4	11.8	9.9	6.5	9.1	5.4	6.1	14.8	8.3	8.1
Leukemije(C91-C95) Leukaemias	8.3	7.7	12.3	7.1	6.8	14.1	8.8	10.8	9.9	6.6	7.5	10.9	8.2	9.1	7.6	7.0	6.1	4.2	4.1
Bubreg(C64) Kidney	6.8	8.6	8.9	7.7	4.1	7.5	6.8	11.6	4.9	1.9	2.1	6.0	6.5	1.5	4.9	1.7	7.9	4.2	6.1
Jednjak(C15) Oesophagus	5.2	5.5	7.8	4.5	4.1	8.4	6.8	9.1	2.8	8.5	2.1	5.0	1.6	4.6	3.8	1.7	5.2	8.3	8.1
Druge lokalizacije Other sites	56.3	61.9	62.4	43.1	45.6	62.9	48.7	74.6	59.2	57.9	53.4	55.7	57.2	44.1	63.3	29.7	49.7	51.9	42.7
Sve lokalizacije (C00-C97) All sites	319.2	341.9	351.1	296.1	259.1	388.5	277.8	382.2	302.1	330.7	285.4	323.0	361.2	269.3	304.7	236.6	294.0	249.1	319.4
Sve lokalizacije bez kože (C44) All sites but skin (C44)	316.9	340.3	347.8	293.6	258.4	383.8	276.5	375.6	301.4	329.8	280.1	320.0	358.0	266.2	302.5	234.9	289.6	247.0	319.4

Tabela 14. Stope mortaliteta od raka na 100.000 stanovnika prema vodećim lokalizacijama i okruzima, žene, centralna Srbija, 2008. godina

Table 14. Cancer mortality rates per 100.000 population by leading primary sites, females, regions in Central Serbia, 2008

Primarne lokalizacije (10-MKB) Primary sites (ICD-10)	O k r u g (R e g i o n)																		
	centralna Srbija	Grad Beograd	Kolubarski	Mačvanski	Raški	Moravički	Zlatiborski	Rasinski	Šumadijski	Pomoravski	Braničevski	Podunavski	Zajčarski	Borski	Nišavski	Pčinjki	Jablanički	Toplički	Pirotski
Dojka (C50) Breast	40.6	51.2	30.3	40.6	40.6	40.6	40.6	40.6	40.6	40.6	40.6	40.6	40.6	40.6	40.6	40.6	40.6	40.6	40.6
Pluća i bronh (C34) Lung and bronchus	30.0	38.6	26.0	29.0	11.9	23.4	24.9	18.1	30.2	34.7	24.9	24.2	27.9	14.6	23.6	21.0	18.3	21.0	22.9
Kolon i rektum (C18-C20) Colon and rectum	27.3	29.9	24.6	23.1	14.5	22.6	22.5	42.1	24.9	27.5	28.7	40.9	24.9	30.6	19.4	19.3	17.4	14.7	35.4
Grič materice (C53) Cervix uteri	14.1	13.4	22.5	6.9	17.8	16.3	13.9	12.7	13.4	18.7	16.3	21.2	11.0	26.2	12.1	8.8	16.5	8.4	4.2
Pankreas (C25) Pancreas	12.8	14.6	9.6	8.1	15.2	13.6	7.9	14.3	8.7	13.3	17.2	15.1	9.0	10.2	14.7	7.0	10.5	12.6	20.8
Želudac (C16) Stomach	10.3	10.3	16.1	16.2	9.2	8.2	7.3	8.7	11.4	10.7	11.5	7.7	10.3	4.4	11.0	10.5	11.3	8.4	14.6
Ovarijum (C56) Ovary	10.2	10.1	10.7	10.6	7.9	13.6	7.9	7.9	14.8	12.4	11.5	16.7	6.0	4.4	8.9	5.3	9.6	10.5	14.6
Mozak (C71) Brain	7.6	10.1	7.5	6.2	11.2	8.2	5.9	9.5	4.7	6.2	4.8	4.6	10.1	4.4	5.8	1.8	2.6	4.2	14.6
Jetra (C22) Liver	7.4	5.7	3.2	8.1	11.9	5.4	10.6	7.1	8.7	3.6	8.6	6.2	5.7	5.8	9.4	2.6	7.0	8.4	20.8
Leukemije(C91-C95) Leukaemias	5.9	6.8	5.4	3.7	4.6	4.5	8.6	8.7	8.7	2.7	4.8	10.6	7.0	7.3	5.2	3.5	4.4	8.4	6.2
Bubreg(C64) Kidney	3.5	5.0	3.3	3.2	2.0	0.9	2.6	2.4	1.3	2.7	5.8	1.5	5.0	1.5	3.7	0.0	4.4	2.1	6.2
Mokraćna bešika (C67) Bladder	3.5	4.9	1.1	5.0	2.0	1.8	3.3	0.8	6.7	5.3	3.8	3.1	4.9	2.9	2.6	4.4	0.9	2.1	8.3
Druge lokalizacije Other sites	55.8	58.7	50.9	50.8	41.9	54.6	44.8	66.8	51.4	51.8	55.9	53.6	96.9	57.0	66.9	4.0	57.8	28.8	63.4
Sve lokalizacije (C00-C97) All sites	229.0	259.2	211.3	211.7	190.9	213.7	200.8	239.9	225.8	230.2	234.2	246.0	259.2	209.8	223.9	128.7	201.2	170.4	272.5
Sve lokalizacije bez kože (C44) All sites but skin (C44)	226.6	257.9	215.4	209.8	188.9	211.0	196.2	239.1	223.8	229.3	230.4	242.9	257.9	206.9	220.3	127.0	191.6	166.2	272.5

Tabela 15. Standardizovane stope mortaliteta od raka na 100.000 stanovnika prema vodećim lokalizacijama i okruzima, muškarci centralna Srbija, 2008. godina

Table 15. Standardized cancer mortality rates per 100.000 population by leading primary sites, males, regions in Central Serbia, 2008

Primarne lokalizacije (10-MKB) Primary sites (ICD-10)	centralna Srbija	O k r u g (R e g i o n)																	
		Grad Beograd	Kolubarski	Mačvanski	Raski	Moravički	Zlatiborski	Rasinski	Šumadijski	Pomoravski	Braničevski	Podunavski	Zaječarski	Borski	Nišavski	Pčinjski	Jablanički	Toplički	Pirotski
Pluća i bronh. (C34) Lung and bronchus	54.2	59.2	66.8	56.3	51.5	63.8	52.8	52.5	41.3	52.0	43.4	61.2	51.2	36.5	46.7	54.3	53.7	41.8	41.2
Kolon i rektum (C18-C20) Colon and rectum	19.0	24.1	21.3	20.3	15.5	21.9	11.7	21.5	19.6	18.3	9.7	14.5	15.7	13.7	19.4	12.7	13.0	16.8	18.1
Prostata (C61) Prostate	11.0	11.7	7.9	10.4	8.0	15.0	11.9	10.3	10.4	8.5	13.4	17.0	13.9	15.3	8.8	11.4	8.6	5.3	9.8
Želudac (C16) Stomach	9.8	10.2	10.6	13.3	9.2	7.4	10.3	10.6	8.9	6.6	7.2	9.6	7.6	2.9	10.6	17.0	11.9	11.0	8.8
Pankreas (C25) Pancreas	8.3	8.3	11.1	5.9	10.7	7.1	6.7	7.7	9.8	11.7	9.5	8.3	10.4	13.4	5.9	10.3	8.3	3.0	6.4
Mokraćna bešika (C67) Bladder	5.1	6.9	3.0	3.9	3.5	6.5	3.8	6.1	5.0	6.6	4.2	7.0	1.3	4.3	5.5	5.8	1.2	1.7	1.6
Jetra (C22) Liver	6.5	6.4	6.1	7.3	11.3	5.4	4.0	7.9	2.7	6.1	10.5	4.6	7.6	4.0	4.9	8.3	8.8	2.1	12.9
Larinks (C32) Larynx	5.5	4.4	3.7	6.8	3.3	5.6	4.7	7.0	8.9	4.7	5.0	7.5	4.6	5.2	6.3	10.3	6.8	5.4	0.9
Mozak (C71) Brain	6.3	6.9	5.2	5.2	10.4	10.5	2.2	9.4	6.8	6.3	5.7	6.1	2.4	5.4	3.6	4.4	8.4	5.7	3.8
Leukemije(C91-C95) Leukaemias	4.4	4.1	6.0	4.5	3.7	6.2	4.6	5.6	5.0	3.8	3.6	5.3	3.9	5.9	3.5	5.4	3.5	1.9	0.9
Bubreg(C64) Kidney	3.7	4.6	1.3	4.6	2.4	3.7	3.9	6.7	2.7	1.5	3.8	3.5	3.3	1.0	3.1	1.5	4.5	2.9	1.9
Jednjak(C15) Oesophagus	2.9	3.1	4.8	2.6	2.7	3.8	3.9	4.4	1.4	3.2	1.3	2.9	0.7	2.4	1.9	1.3	3.3	5.5	4.3
Druge lokalizacije Other sites	30.8	34.6	27.5	26.2	29.3	32.0	26.9	39.3	33.3	29.4	58.8	29.1	45.8	24.9	31.6	21.4	28.3	30.5	15.8
Sve lokalizacije (C00-C97) All sites	167.6	184.5	175.2	167.2	161.5	188.9	147.3	189.1	155.8	158.7	176.2	176.5	168.3	134.9	151.8	164.1	160.2	133.6	126.5
Sve lokalizacije bez kože (C44) All sites but skin (C44)	166.6	183.7	173.4	166.1	161.0	186.7	146.9	186.2	155.3	158.5	174.6	175.5	148.7	132.7	151.1	163.2	158.1	132.1	126.5

Tabela 16. Standardizovane stope mortaliteta od raka na 100.000 stanovnika prema vodećim lokalizacijama i okruzima, žene, centralna Srbija, 2008. godina

Table 16. Standardized cancer mortality rates per 100.000 population by leading primary sites, females, regions in Central Serbia, 2008

Primarne lokalizacije (10-MKB) Primary sites (ICD-10)	centralna Srbija	O k r u g (R e g i o n)																	
		Grad Beograd	Kolubarski	Mačvanski	Raski	Moravički	Zlatiborski	Rasinski	Šumadijski	Pomoravski	Braničevski	Podunavski	Zaječarski	Borski	Nišavski	Pčinjski	Jablanički	Toplički	Pirotski
Dojka (C50) Breast	20.3	25.4	17.3	21.1	15.4	19.8	14.4	17.9	21.4	16.2	15.3	21.8	18.9	21.5	17.5	12.1	14.9	15.9	18.7
Pluća i bronh (C34) Lung and bronchus	14.9	18.5	12.4	15.3	15.1	12.2	11.8	13.2	15.4	16.4	13.1	23.4	13.2	5.3	12.3	14.3	10.0	7.7	12.9
Kolon i rektum (C18-C20) Colon and rectum	11.4	12.5	8.7	10.8	7.1	8.7	9.9	16.3	10.8	10.2	17.7	13.1	9.1	12.1	8.4	11.4	8.3	4.7	14.5
Grlić materice (C53) Cervix uteri	8.0	7.6	10.2	8.7	11.0	8.7	7.8	6.1	7.8	11.7	12.2	4.0	13.5	13.2	7.0	6.4	10.0	4.5	1.3
Pankreas (C25) Pancreas	5.1	6.4	4.9	3.8	7.5	4.5	3.6	5.2	4.1	4.8	3.6	6.5	1.8	4.5	4.9	3.6	3.6	5.2	5.9
Želudac (C16) Stomach	4.4	4.8	1.9	6.6	4.4	3.1	3.6	3.5	4.8	5.4	5.9	4.4	1.8	1.9	4.2	5.8	4.5	3.0	4.6
Ovarijum (C56) Ovary	5.4	5.1	5.9	6.2	4.9	5.0	4.5	2.8	7.6	7.6	3.5	11.6	3.5	2.8	4.8	3.6	6.4	5.1	9.3
Mozak (C71) Brain	4.3	5.1	4.2	2.8	6.5	4.8	3.7	5.4	3.1	3.4	3.0	7.6	5.5	3.0	4.2	1.3	1.5	2.4	7.7
Jetra (C22) Liver	3.1	2.6	2.3	4.3	5.3	1.7	5.0	3.4	3.9	0.6	2.5	1.5	2.1	3.4	4.3	1.5	3.4	3.7	7.5
Leukemije(C91-C95) Leukaemias	2.9	3.6	3.4	2.0	2.4	2.4	4.1	3.0	3.6	0.8	2.1	0.8	0.2	3.3	2.3	2.5	3.2	4.1	1.7
Bubreg(C64) Kidney	1.5	2.1	0.7	1.6	0.8	0.7	1.3	0.9	0.8	0.6	2.4	2.5	0.7	0.7	1.8	0.0	1.5	1.5	2.4
Mokraćna bešika (C67) Bladder	1.3	2.1	0.2	0.7	1.0	0.5	1.4	0.4	3.0	1.4	0.3	0.4	0.5	0.6	0.8	2.2	0.2	0.4	2.7
Druge lokalizacije Other sites	25.3	26.5	23.9	25.4	22.4	24.5	26.9	25.2	26.0	20.3	25.2	26.0	44.1	23.8	31.4	15.2	31.3	15.5	24.4
Sve lokalizacije (C00-C97) All sites	107.7	122.3	96.0	109.3	103.7	96.5	97.9	103.2	112.2	99.6	106.9	123.7	115.0	96.1	103.9	79.9	98.8	73.7	113.5
Sve lokalizacije bez kože (C44) All sites but skin (C44)	107.0	121.9	96.0	109.1	102.8	95.9	95.9	103.1	111.7	99.4	105.9	122.8	92.9	95.1	102.8	79.3	95.9	72.3	113.5

Tabela 17. Ukupan broj novoobolelih i broj novoobolelih od raka sa procentom registrovanih samo na osnovu prijave smrti, prema primarnoj lokalizaciji i polu, centralna Srbija, 2008. godina

Table 17. Total number of new cancer cases and number and percentage of cases registered from death certificates only, by primary site and sex, Central Serbia, 2008

MKB-10 (ICD-10) Šifra (Code) Ukupno (All)	Primarna lokalizacija Primary site	POL SEX M (Male) Ž (Female)	Ukupno (All) 13261 11974	Broj registrovanih samo na osnovu prijave smrti Number of cases registered from death certificates only		%
				754	603	
C00	Usna Lip	M Ž	75 33	2 0		2.7% 0.0%
C01	Jezik, koren Base of tongue	M Ž	30 12	0 0		0.0% 0.0%
C02	Jezik, drugi delovi Tongue, other & unspecified parts	M Ž	44 6	0 0		0.0% 0.0%
C03	Desni Gum	M Ž	5 1	0 0		0.0% 0.0%
C04	Pod usta Floor of mouth	M Ž	42 10	1 0		2.4% 0.0%
C05	Nepece Palate	M Ž	17 9	1 0		5.9% 0.0%
C06	Usta, drugi delovi Mouth, other & unspecified parts	M Ž	16 13	0 0		0.0% 0.0%
C07	Parotidna žlezda Parotid gland	M Ž	36 19	1 0		2.8% 0.0%
C08	Pljučna žlezda Other & unspec. major salivary gl.	M Ž	14 7	0 0		0.0% 0.0%
C09	Krajnik Tonsil	M Ž	29 12	0 1		0.0% 8.3%
C10	Orofarings Oropharynx	M Ž	26 6	0 0		0.0% 0.0%
C11	Nasofarings Nasopharynx	M Ž	15 14	2 0		13.3% 0.0%
C12	Piriformni sinus Pyriform sinus	M Ž	4 0	0 0		0.0% 0.0%
C13	Hipofarings Hypopharynx	M Ž	53 13	1 1		1.9% 7.7%
C14	Usne, usta, ždrello, drugi delovi Other and ill def. sites in the lip, oral cavity & pharynx	M Ž	12 6	0 0		0.0% 0.0%
C15	Jednjak Oesophagus	M Ž	117 48	7 3		6.0% 6.3%
C16	Želudac Stomach	M Ž	609 329	37 63		6.1% 19.1%
C17	Tanko crevo Small intestine	M Ž	28 31	0 1		0.0% 3.2%
C18	Debelo crevo Colon	M Ž	917 548	58 16		6.3% 2.9%
C19	Rektosigmoidni prelaz Rectosigmoid junction	M Ž	138 71	10 3		7.2% 4.2%
C20	Rektum Rectum	M Ž	852 430	29 20		3.4% 4.7%
C21	Anus i analni kanal Anus & anal canal	M Ž	25 17	0 0		0.0% 0.0%
C22	Jetra, žučni kanali Liver & intrahepatic bile ducts	M Ž	305 186	39 45		12.8% 24.2%
C23	Žučna kesa Gallbladder	M Ž	44 82	3 4		6.8% 4.9%
C24	Žučni kanali, drugi delovi Biliary tract, other & unspec. parts	M Ž	31 30	2 1		6.5% 3.3%
C25	Pankreas Pancreas	M Ž	356 234	32 29		9.0% 12.4%
C26	Org. za var., ned. odred. lok. Other & ill-defined digestive organs	M Ž	24 23	2 1		8.3% 4.3%
C30	Nosna šupljina i srednje uvo Nasal cavity & middle ear	M Ž	11 16	0 1		0.0% 6.3%
C31	Nosni sinusi Accessory sinuses	M Ž	11 9	1 0		9.1% 0.0%
C32	Larings Larynx	M Ž	490 73	8 2		1.6% 2.7%
C33	Tracheja Trachea	M Ž	7 4	0 0		0.0% 0.0%
C34	Bronh i pluća Bronchus & lung	M Ž	2821 965	321 121		11.4% 12.5%
C37	Timus Thymus	M Ž	4 2	0 0		0.0% 0.0%
C38	Srce, mediastinum, pleura Heart, mediastinum & pleura	M Ž	22 27	2 1		9.1% 3.7%
C39	Toraks, druge lokalizacije Other & ill-def. in the res.sys.	M Ž	1 3	0 0		0.0% 0.0%
C40	Kosti i zglobovi, hrskavice udova Bone & articular cartilage of limbs	M Ž	30 24	0 0		0.0% 0.0%
C41	Kosti i zglobovi, hrskav., dr. lok. Bone & articular cartilage of other	M Ž	24 30	4 5		16.7% 16.7%
C43	Koža, maligni melanom Malignant melanoma of skin	M Ž	197 203	4 3		2.0% 1.5%
C44	Koža, drugi mal. tumori Skin, other malignomas	M Ž	1644 1577	10 14		0.6% 0.9%
C45	Mezoteliom Mesothelioma	M Ž	17 0	0 0		0.0% 0.0%
C46	Kaposijev sarkom Kaposi's sarcoma	M Ž	2 3	0 0		0.0% 0.0%
C47	Periferni nervi i aut. ner. sis. Peripheral nerves & auton. nerv. sys.	M Ž	10 5	0 0		0.0% 0.0%
C48	Peritoneum i retroperitoneum Retroperitoneum & peritoneum	M Ž	22 26	4 4		18.2% 15.4%
C49	Vezivna i meka tkiva, drugi Other connective and soft tissue	M Ž	57 59	1 1		1.8% 1.7%
C50	Dojka Breast	M Ž	51 2869	1 118		2.0% 4.1%

Tabela 17.1 Ukupan broj novoobolelih i broj novoobolelih od raka sa procentom registrovanih samo na osnovu prijave smrti, prema primarnoj lokalizaciji i polu, centralna Srbija, 2008. godina (nastavak)

Table 17.1 Total number of new cancer cases and number and percentage of cases registered from death certificates only, by primary site and sex, Central Serbia, 2008 (continued)

MKB-10 (ICD-10) Sifra (Code) Ukupno (All)	Primarna lokalizacija Primary site	POL SEX M (Male) Ž (Female)	Ukupno (All) 13261 11974	Broj registrovanih samo na osnovu prijave smrti Number of cases registered from death certificates only		%
				754	5.7%	
				603	5.0%	
C51	Vulva Vulva	Ž	94	4	4.3%	
C52	Vagina Vagina	Ž	26	1	3.8%	
C53	Grlić materice Cervix uteri	Ž	945	10	1.1%	
C54	Materica, telo Corpus uteri	Ž	678	4	0.6%	
C55	Materica, neoznačeni deo Uterus, unspecified part	Ž	27	22	81.5%	
C56	Jajnik Ovary	Ž	458	12	2.6%	
C57	Zenski gen.org., dr. neoz. lok. Other & unspec.parts of fem. gen.org.	Ž	26	0	0.0%	
C58	Placenta Placenta	Ž	0	0	0.0%	
C60	Penis Penis	M	29	1	3.4%	
C61	Prostata Prostate	M	1432	47	3.3%	
C62	Testis Testis	M	121	4	3.3%	
C63	Muški gen. org., dr. neoz. org. Other & unspec. male genital organs	M	10	0	0.0%	
C64	Bubreg Kidney, except renal pelvis	M Ž	292 185	8 9	2.7% 4.9%	
C65	Bubrežna karlica Renal pelvis	M Ž	28 24	0 0	0.0% 0.0%	
C66	Ureter Ureter	M Ž	17 16	1 0	5.9% 0.0%	
C67	Mokraćna bešika Bladder	M Ž	804 266	19 5	2.4% 1.9%	
C68	Urinarni organi, dr. neoz. org. Other & unspecified urinary organs	M Ž	2 0	0 0	0.0% 0.0%	
C69	Oko, pripoji oka Eye and adnexa	M Ž	29 23	3 0	10.3% 0.0%	
C70	Moždanice Meninges	M Ž	16 22	0 0	0.0% 0.0%	
C71	Mozak Brain	M Ž	289 247	20 20	6.9% 8.1%	
C72	Centralni ner. sis., dr. delovi Spinal cord, cran. nerv. & oth. parts of CNS	M Ž	13 12	2 1	15.4% 8.3%	
C73	Štitasta žlezda Thyroid gland	M Ž	38 193	0 3	0.0% 1.6%	
C74	Nadbubrežna žlezda Adrenal gland	M Ž	15 16	1 1	6.7% 6.3%	
C75	Endokrine žlezde, druge Other endocrine glands & related structures	M Ž	5 12	0 0	0.0% 0.0%	
C76	Ostale lokalizacije Other & ill defined sites	M Ž	41 37	8 19	19.5% 51.4%	
C77-C80	Sekundarne lok., bez ozn. lok. Unspec. mal.neo.of lymph nod. & without of spec.of site	M Ž	276 207	22 16	8.0% 7.7%	
C81	Hodgkinova bolest Hodgkin's disease	M Ž	77 72	2 0	2.6% 0.0%	
C82	Ne-Hodgkinov lim., folikularni Follicular non-Hodgkin's lymphoma	M Ž	18 26	1 0	5.6% 0.0%	
C83	Ne-Hodgkinov lim., difuzni Diffuse non-Hodgkin's lymphoma	M Ž	46 42	3 0	6.5% 0.0%	
C84	Periferni i kožni lim. T-ćelija Peripheral & cutaneous T-cell lymphomas	M Ž	6 3	0 0	0.0% 0.0%	
C85	Ne-Hodgkinovi limfomi, drugi Other & unspecified types of non-Hodgkin's lymphoma	M Ž	101 56	3 3	3.0% 5.4%	
C88	Zloćudne imunoprolifer. bolesti Malignant immunoproliferative diseases	M Ž	3 1	0 0	0.0% 0.0%	
C90	Mult. mijelom i zloć. tum. plaz. ćel. Multiple myeloma and malignant plasma cell neoplasms	M Ž	57 51	8 5	14.0% 9.8%	
C91	Limfoidna leukemija Lymphoblastic, lymphoid leukaemia	M Ž	110 50	4 5	3.6% 10.0%	
C92	Mijeloidna leukemija Myeloid leukaemia	M Ž	71 53	3 1	4.2% 1.9%	
C93	Monocitna leukemija Monocytic leukaemia	M Ž	1 1	0 0	0.0% 0.0%	
C94	Leukemije, druge Other leukaemias of specified cells	M Ž	4 0	1 0	25.0% 0.0%	
C95	Leukemije, neoznačene Leukaemia, unspecified cell type	M Ž	25 13	8 4	32.0% 30.8%	
C96	Dr. zloć. tum. hematop. sist. Other & unspec. mal.neoplasm of lymphoid, haemato. & related tissue	M Ž	0 3	0 0	0.0% 0.0%	
C00-C96 (C44)	Sve lokalizacije, bez kože All sites but skin	M Ž	11617 10397	744 589	6.4% 5.7%	

Tabela 18. Broj novoobolelih slučajeva od raka, prema primarnoj lokalizaciji (MKB-10), uzrastu i polu, centralna Srbija, 2008. godina

Table 18. Number of new cancer cases by primary site (ICD-10), age and sex, Central Serbia, 2008

MKB-10 (ICD-10) Šifra (Code) Ukupno (All)	Primarna lokalizacija Primary site	POL SEX M (Male) Ž (Female)	Ukupno (All) 11974	0-4	5-9	10-14	15-19	20-24	25-29	30-34	35-39	40-44	45-49	50-54	55-59	60-64	65-69	70-74	75+	%
				15	9	13	37	52	75	98	131	252	559	1066	1725	1679	1962	2446	3142	100.0%
C00	Usna Lip	M Ž	75 33	-	-	-	-	-	-	-	1	2	3	2	11	8	14	13	21	0.6%
C01	Jezik, koren Base of tongue	M Ž	30 12	-	-	-	-	-	-	-	-	1	1	4	6	4	4	7	3	0.2%
C02	Jezik, drugi delovi Tongue, other & unspecified parts	M Ž	44 6	-	-	-	-	-	-	-	2	3	12	11	3	8	-	5	0.3%	
C03	Desni Gum	M Ž	5 1	-	-	-	-	-	-	-	-	-	-	2	1	-	-	1	0.0%	
C04	Pod usta Floor of mouth	M Ž	42 10	-	-	-	-	-	2	-	-	3	6	4	11	3	3	10	0.3%	
C05	Nepece Palate	M Ž	17 9	-	-	-	1	-	-	-	1	4	3	1	2	4	-	1	0.1%	
C06	Usta, drugi delovi Mouth, other & unspecified parts	M Ž	16 13	-	-	-	-	1	-	1	2	-	-	2	3	2	4	4	-	0.1%
C07	Parotidna žlezda Parotid gland	M Ž	36 19	-	-	-	-	-	-	1	1	-	3	6	4	4	11	6	0.3%	
C08	Pljučna žlezda Other & unsp. major salivary gl.	M Ž	14 7	-	-	-	-	-	-	1	1	2	1	2	7	3	4	1	3	0.2%
C09	Krajnik Tonsil	M Ž	29 12	-	-	-	-	-	-	-	-	1	2	1	8	3	4	1	3	0.2%
C10	Orofarings Oropharynx	M Ž	26 6	-	-	-	1	-	-	-	-	-	2	2	7	7	1	4	0.2%	
C11	Nasofarings Nasopharynx	M Ž	15 14	-	-	-	-	-	-	-	-	2	3	-	3	2	3	2	0.1%	
C12	Piriformni sinus Pyriform sinus	M Ž	4 0	-	-	-	-	-	-	-	-	1	-	1	-	-	1	-	0.0%	
C13	Hipofarings Hypopharynx	M Ž	53 13	-	-	-	-	-	-	1	-	5	10	10	14	6	5	1	0.4%	
C14	Usne, usta, zdrelo, drugi delovi Other and ill def.sites in the lip,oral cavity&ph	M Ž	12 6	-	-	-	-	-	-	-	-	2	-	2	-	4	2	2	0.1%	
C15	Jednjak Oesophagus	M Ž	117 48	-	-	-	-	-	-	3	1	5	11	19	28	19	18	13	0.9%	
C16	Želudac Stomach	M Ž	609 329	-	-	-	-	2	-	2	16	29	55	58	63	91	135	158	4.6%	
C17	Tanko crevo Small intestine	M Ž	28 31	-	-	-	-	-	1	-	-	2	2	7	3	3	2	8	0.2%	
C18	Debelo crevo Colon	M Ž	917 548	-	-	-	-	5	4	5	8	8	27	64	103	126	157	198	212	6.9%
C19	Rektosigmoidni prelaz Rectosigmoid junction	M Ž	138 71	-	-	-	-	-	-	2	1	5	8	17	20	25	23	37	1.0%	
C20	Rektum Rectum	M Ž	852 430	-	-	-	-	-	3	3	6	8	32	74	102	108	142	179	195	6.4%
C21	Anus i analni kanal Anus & anal canal	M Ž	25 17	-	-	-	-	-	2	3	6	3	19	29	49	49	76	79	115	3.6%
C22	Jetra, žučni kanali Liver & intrahepatic bile ducts	M Ž	305 186	1	-	-	1	-	-	2	2	5	9	18	35	27	50	66	90	2.3%
C23	Žučna kes Gallbladder	M Ž	44 82	-	-	-	-	-	1	-	-	-	5	4	6	7	7	14	0.3%	
C24	Žučni kanali, drugi delovi Biliary tract, other & unsp. parts	M Ž	31 30	-	-	-	-	-	-	-	-	1	-	3	2	4	5	8	8	0.2%
C25	Pankreas Pancreas	M Ž	356 234	-	-	-	-	-	1	1	4	12	14	25	57	28	57	84	73	2.7%
C26	Org. za var., ned. odre. lok. Other & ill-defined digestive organs	M Ž	24 23	-	-	-	-	-	-	1	-	-	-	3	2	5	1	4	8	0.2%
C30	Nosna šupljina i srednje uvo Nasal cavity & middle ear	M Ž	11 16	-	-	-	-	-	-	-	-	1	1	1	1	1	-	6	0.1%	
C31	Nosni sinusi Accessory sinuses	M Ž	11 9	-	-	-	1	-	-	2	-	-	-	1	-	2	2	3	0.1%	
C32	Larings Larynx	M Ž	490 73	-	-	-	-	-	-	3	2	9	34	96	99	76	60	57	54	3.7%
C33	Traheja Trachea	M Ž	7 4	-	-	-	-	-	-	-	-	-	1	2	2	1	1	-	0.1%	
C34	Bronh i pluća Bronchus & lung	M Ž	2821 965	-	-	-	-	2	1	3	4	31	64	124	171	130	132	121	182	8.1%
C37	Timus Thymus	M Ž	4 2	-	-	-	-	-	-	-	-	1	-	-	1	-	-	1	0.0%	
C38	Srce, mediastinum, pleura Heart, mediastinum & pleura	M Ž	22 27	-	-	-	-	-	-	-	1	1	1	3	4	3	3	7	0.2%	
C39	Toraks, druge lokalizacije Other & ill-def. in the res.sys.	M Ž	1 3	-	-	-	-	-	-	-	-	-	-	1	2	-	-	-	0.0%	
C40	Kosti i zglob. hrskavice udova Bone & articular cartilage of limbs	M Ž	30 24	-	1	3	4	1	1	2	1	-	2	4	-	2	2	4	3	0.2%
C41	Kosti i zglob. hrskav., dr. lok. Bone & articular cartilage of other	M Ž	24 30	-	1	-	1	-	-	1	-	1	2	2	3	3	1	5	4	0.2%
C43	Koža, maligni melanom Malignant melanoma of skin	M Ž	197 203	-	-	-	-	2	1	11	9	10	14	22	31	20	23	22	32	1.5%
C44	Koža, drugi mal. tumori Skin, other malignomas	M Ž	1644 1577	-	-	-	1	2	3	10	11	26	57	91	152	167	264	307	553	12.4%
C45	Mezotelijom Mesothelioma	M Ž	17 0	-	-	-	-	-	-	-	-	1	4	2	4	-	-	4	2	0.1%
C46	Kaposijev sarkom Kaposi's sarcoma	M Ž	2 3	-	-	-	-	-	-	1	-	-	-	-	-	-	-	1	0.0%	
C47	Periferi nervi i aut. ner. sis. Peripheral nerves & auton. nerv. sys.	M Ž	10 5	-	-	-	-	-	-	-	1	1	1	-	1	1	-	5	0.1%	
C48	Peritoneum i retroperitoneum Retroperitoneum & peritoneum	M Ž	22 26	-	-	-	-	-	-	-	-	1	4	1	2	2	4	3	5	0.2%
C49	Vezivna i meka tkiva, drugi Other connective and soft tissue	M Ž	57 59	-	1	-	2	-	3	2	3	3	6	7	9	4	2	5	10	0.4%
C50	Dojka Breast	M Ž	51 2869	-	-	-	-	2	8	41	83	190	286	363	427	366	341	328	434	24.0%

Tabela 18.1 Broj novoobolelih slučajeva od raka, prema primarnoj lokalizaciji (MKB-10), uzrastu i polu, centralna Srbija, 2008.godina (nastavak)

Table 18.1 Number of new cancer cases by primary site (ICD-10), age and sex, Central Serbia, 2008 (continued)

MKB-10 (ICD-10) Šifra (Code)	Primarna lokalizacija Primary site	POL SEX	Ukupno (All)	U Z R A S T (A g e)														%			
				M (Male)	0-4	5-9	10-14	15-19	20-24	25-29	30-34	35-39	40-44	45-49	50-54	55-59	60-64		65-69	70-74	75+
Ukupno (All)		Ž (Female)	11974	12	10	16	25	51	82	221	294	520	839	1191	1681	1392	1453	1679	2508	100.0%	
C51	Vulva Vulva	Ž	94	-	-	-	-	-	-	-	-	2	2	3	5	12	9	18	16	27	0.8%
C52	Vagina Vagina	Ž	26	-	-	-	-	-	-	-	-	-	-	2	1	3	4	4	5	7	0.2%
C53	Grlić materice Cervix uteri	Ž	945	-	-	-	-	-	12	59	79	110	118	136	136	76	63	73	83	7.9%	
C54	Materica, telo Corpus uteri	Ž	678	-	-	-	-	-	1	8	8	13	49	83	142	108	90	79	97	5.7%	
C55	Materica, neoznačeni deo Uterus, unspecified part	Ž	27	-	-	-	-	-	-	-	-	1	1	1	1	5	-	7	11	0.2%	
C56	Jajnik Ovary	Ž	458	-	-	2	3	12	11	10	9	36	42	50	65	52	60	48	58	3.8%	
C57	Ženski gen.org., dr. neoz. lok. Other & unspec.parts of fem. gen.org.	Ž	26	-	-	-	-	-	1	1	1	2	2	1	2	3	1	9	3	0.2%	
C58	Placenta Placenta	Ž	0	-	-	-	-	-	-	-	-	-	-	-	-	-	-	-	-	0.0%	
C60	Penis Penis	M	29	-	-	-	-	-	-	-	-	2	3	2	5	2	2	7	6	0.2%	
C61	Prostata Prostate	M	1432	-	-	-	-	-	1	-	-	7	7	21	87	152	235	360	562	10.8%	
C62	Testis Testis	M	121	2	-	1	6	15	23	18	18	12	7	9	7	1	-	1	1	0.9%	
C63	Muški gen. org., dr. neoz. org. Other & unspec. male genital organs	M	10	-	-	-	-	-	-	-	-	1	1	-	-	1	-	3	4	0.1%	
C64	Bubreg Kidney, except renal pelvis	M	292	-	-	-	-	1	2	1	6	15	14	30	44	40	40	46	53	2.2%	
C65	Bubrežna karlica Renal pelvis	Ž	28	-	-	-	-	-	-	-	-	-	2	1	5	6	7	3	4	0.2%	
C66	Ureter Ureter	M	17	-	-	-	-	-	-	-	-	-	-	1	1	1	5	1	8	0.1%	
C67	Mokraćna bešika Bladder	M	804	-	-	-	-	-	6	2	4	17	29	51	101	102	105	150	237	6.1%	
C68	Urinarni organi, dr. neoz. org. Other & unspecified urinary organs	Ž	266	-	-	-	-	2	1	1	-	3	10	18	43	31	29	57	71	2.2%	
C69	Oklo, pripojni oka Eye and adnexa	M	29	1	-	-	-	-	-	-	2	2	2	1	3	2	2	4	10	0.2%	
C70	Moždance Meninges	Ž	22	-	-	-	-	-	-	-	-	-	-	1	3	4	1	4	3	0.2%	
C71	Mozak Brain	M	289	4	1	-	10	6	6	7	9	11	27	31	43	39	28	37	30	2.2%	
C72	Centralni ner. sis., dr. delovi Spinal cord, cran. nerv. & oth. parts of CNS	Ž	247	3	6	2	2	5	6	5	7	5	15	22	35	33	33	31	37	2.1%	
C73	Štitasta žlezda Thyroid gland	M	38	-	-	-	-	-	1	1	1	4	2	5	9	7	3	1	4	0.3%	
C74	Nadbubrežna žlezda Adrenal gland	M	15	-	2	-	-	-	-	-	-	-	2	1	2	2	4	1	1	0.1%	
C75	Endokrine žlezde, druge Other endocrine glands & related structures	Ž	16	-	-	-	-	-	-	1	-	1	-	2	5	2	3	1	1	0.1%	
C76	Ostale lokalizacije Other & ill defined sites	M	5	-	-	-	-	-	-	-	-	-	-	2	1	-	-	1	1	0.0%	
C77-C80	Sekundarne lok., bez ozn. lok. Unspec. mal.neo.of lymph nod.&without of spec	Ž	12	-	-	-	-	-	3	1	1	-	-	1	1	-	2	1	2	0.1%	
C81	Hodgkinova bolest Hodgkin's disease	M	41	-	-	-	-	-	-	-	-	1	-	2	9	5	5	6	13	0.3%	
C82	Ne-Hodgkinov lim., folikularni Follicular non-Hodgkin's lymphoma	Ž	37	-	-	-	-	1	-	1	-	-	5	-	5	2	4	7	12	0.3%	
C83	Ne-Hodgkinov lim., difuzni Diffuse non-Hodgkin's lymphoma	M	276	3	-	4	1	3	2	2	5	16	22	37	27	33	49	70	2.1%		
C84	Periferni i kožni lim. T-ćelija Peripheral & cutaneous T-cell lymphomas	Ž	207	-	-	-	1	-	2	5	4	5	11	21	25	19	28	37	49	1.7%	
C85	Ne-Hodgkinovi limfomi, drugi Other & unspec. types of non-Hodgkin's lymph	M	77	1	-	1	7	7	9	6	3	1	7	7	3	6	6	10	3	0.6%	
C88	Zloćudne imunoprolifer. bolesti Malignant immunoproliferative diseases	Ž	72	-	-	3	1	7	6	11	2	6	3	9	5	6	3	1	9	0.6%	
C89	Ne-Hodgkinov lim., difuzni Diffuse non-Hodgkin's lymphoma	M	18	-	-	-	-	-	1	1	1	3	1	1	3	1	-	4	2	0.1%	
C90	Mult. mijelom i zloć. tum. plaz. ćel. Multiple myeloma and malignant plasma cell n	Ž	26	-	-	-	-	-	-	-	1	1	6	1	6	3	3	4	4	0.2%	
C91	Limfoidna leukemija Lymphoblastic, lymphoid leukaemia	M	46	-	-	1	-	1	-	2	1	1	4	5	6	6	6	11	2	0.3%	
C92	Mijeloidna leukemija Myeloid leukaemia	Ž	42	-	-	-	1	1	-	3	-	2	1	3	9	4	5	4	9	0.4%	
C93	Monocitna leukemija Monocytic leukaemia	M	6	-	-	-	-	-	-	-	-	1	1	2	-	-	-	1	1	0.0%	
C94	Leukemije, druge Other leukaemias of specified cells	Ž	3	-	-	-	-	-	-	-	-	-	-	1	-	-	-	-	-	0.0%	
C95	Leukemije, neoznačene Leukaemia, unspecified cell type	M	101	-	-	2	-	5	2	1	3	1	7	5	13	11	12	14	25	0.8%	
C96	Dr. zloć. tum. hematop. sist. Other&unsp.mal.neo.of lym.haem.& tissue	Ž	56	-	1	1	-	3	2	4	2	3	2	5	7	6	7	7	6	0.5%	
C00-C96	Sve lokalizacije, bez kože All sites but skin	M	3	-	-	-	-	-	-	-	-	-	-	-	1	-	-	-	-	0.0%	
(C44)		Ž	11617	16	9	13	38	50	71	87	120	225	502	975	1573	1512	1698	2139	2745	87.6%	
		Ž	10397	12	10	15	24	50	77	209	270	502	792	1115	1500	1243	1260	1375	1976	86.8%	

Tabela 19. Incidencija od raka na 100.000 stanovnika prema primarnoj lokalizaciji (MKB-10), uzrastu i polu, centralna Srbija, 2008. godina

Table 19. Cancer incidence rates per 100.000 population by primary site (ICD-10), age and sex, Central Serbia, 2008

MKB-10 (ICD-10) Šifra (Code)	Primarna lokalizacija Primary site	POL SEX	Sirova inc. CR	U Z R A S T (A g e)																	Stand. inc. ASR
		M (Male)	507.7	0-4	5-9	10-14	15-19	20-24	25-29	30-34	35-39	40-44	45-49	50-54	55-59	60-64	65-69	70-74	75+		
Ukupno (All)		Ž (Female)	434.0	7.8	7.6	11.5	15.0	30.4	44.6	118.2	166.0	297.7	444.1	562.6	777.4	918.0	980.0	1087.7	1062.2	240.0	
C00	Usna Lip	M Ž	2.9 1.2	-	-	-	-	-	-	-	-	0.6 1.2	1.7 1.0	1.0 5.4	5.9 11.3	10.7 13.1	13.1 15.1	15.1 15.1	15.1	1.5	
C01	Jezik, koren Base of tongue	M Ž	1.1 0.4	-	-	-	-	-	-	-	-	0.6 0.5	0.6 0.6	-	0.5 1.4	1.3 2.0	2.0 2.0	3.2 3.9	5.8 5.1	1.9 0.7	
C02	Jezik, drugi delovi Tongue, other & unspecified parts	M Ž	1.7 0.2	-	-	-	-	-	-	-	-	1.2 0.5	1.7 0.5	5.9 0.5	5.4 0.5	2.2 -	6.4 -	-	3.1 0.8	1.0 0.1	
C03	Desni Gum	M Ž	0.2 0.0	-	-	-	-	-	-	-	-	-	-	1.0 0.5	0.5 -	-	-	0.8 -	0.6 0.0	0.1	
C04	Pod usta Floor of mouth	M Ž	1.6 0.4	-	-	-	-	-	-	1.1	-	-	1.7	3.0	2.0	8.2	2.4	2.5	6.3	1.0	
C05	Nepece Palate	M Ž	0.7 0.3	-	-	-	-	0.6	-	-	-	0.6	2.2	1.5	0.5	1.5	3.2	-	0.6	0.5	
C06	Usta, drugi delovi Mouth, other & unspecified parts	M Ž	0.6 0.5	-	-	-	-	-	-	-	-	0.6	-	1.0	1.5	1.5	3.2	3.3	-	0.4	
C07	Parotidna žlezda Parotid gland	M Ž	1.4 0.7	-	-	-	-	-	-	0.6	0.6	-	1.5	3.0	3.0	3.2	9.0	3.8	0.7	0.3	
C08	Piljuvačna žlezda Other & unspec. major salivary gl.	M Ž	0.5 0.3	-	-	-	-	-	0.5	-	0.6	0.6	1.1	0.5	-	2.4	-	3.1	0.2	0.3	
C09	Krajnik Tonsil	M Ž	1.1 0.4	-	-	-	-	-	-	-	-	0.6	1.1	3.4	4.0	2.2	3.2	0.8	1.9	0.7	
C10	Orofarings Oropharynx	M Ž	1.0 0.2	-	-	-	0.6	-	-	-	-	-	1.1	1.0	1.0	5.2	5.6	0.8	2.5	0.7	
C11	Nasofarings Nasopharynx	M Ž	0.6 0.5	-	-	-	-	-	-	-	-	-	1.1	1.5	-	2.2	1.6	2.5	1.3	0.4	
C12	Piriformni sinus Pyriform sinus	M Ž	0.2 0.0	-	-	-	-	-	-	-	-	0.6	-	0.5	-	-	0.8	-	0.6	0.1	
C13	Hipofarings Hypopharynx	M Ž	2.0 0.5	-	-	-	-	-	0.5	-	0.6	2.8	4.9	4.9	10.4	4.8	4.1	0.6	1.3	0.3	
C14	Usne, usta, ždrelo, drugi delovi Other and ill def.sites in the lip,oral cavity&ph:	M Ž	0.5 0.2	-	-	-	-	-	-	-	-	1.1	-	1.0	-	3.2	1.6	1.3	0.3	0.1	
C15	Jednjak Oesophagus	M Ž	4.5 1.7	-	-	-	-	-	-	-	1.7	0.6	2.8	5.4	9.4	20.8	15.3	14.8	8.1	2.7	
C16	Želudac Stomach	M Ž	23.3 11.9	-	-	-	-	1.1	-	1.1	9.5	16.0	27.1	28.7	46.7	73.3	110.9	98.9	12.5	5.7	
C17	Tanko crevo Small intestine	M Ž	1.1 1.1	-	-	-	-	-	-	0.5	-	-	1.1	1.0	3.5	2.2	2.4	1.6	5.0	0.6	
C18	Debelo crevo Colon	M Ž	35.1 19.9	-	-	-	2.8	2.1	2.7	4.6	4.7	14.9	31.5	50.9	93.5	126.5	162.7	132.7	19.1	0.6	
C19	Rektosigmoidni prelaz Rectosigmoid junction	M Ž	5.3 2.6	-	-	-	-	-	-	0.5	-	1.1	0.6	2.8	3.9	8.4	14.8	20.1	18.9	23.2	2.6
C20	Rektum Rectum	M Ž	32.6 15.6	-	-	-	-	-	1.6	1.6	3.4	4.7	17.7	36.5	50.4	80.1	114.4	147.1	122.0	17.6	
C21	Anus i analni kanal Anus & anal canal	M Ž	1.0 0.6	-	-	-	-	-	-	-	-	0.6	0.6	2.0	1.5	3.0	4.0	1.6	3.1	0.6	
C22	Jetra, žučni kanali Liver & intrahepatic bile ducts	M Ž	11.7 6.7	0.7	-	-	-	-	-	1.1	1.1	3.0	5.0	8.9	17.3	20.0	40.3	54.2	56.3	6.1	
C23	Žučna kesa Gallbladder	M Ž	1.7 3.0	-	-	-	-	-	-	0.5	-	-	-	2.5	2.0	4.5	5.6	5.8	8.8	0.9	
C24	Žučni kanali, drugi delovi Biliary tract, other & unspec. parts	M Ž	1.2 1.1	-	-	-	-	-	-	-	-	0.6	-	1.5	1.0	3.0	4.0	6.6	5.0	0.6	
C25	Pankreas Pancreas	M Ž	13.6 8.5	-	-	-	-	0.5	0.5	2.3	3.4	7.4	8.5	15.1	37.0	38.3	58.0	67.3	60.6	9.6	
C26	Org. za var., ned. odrež. lok. Other & ill-defined digestive organs	M Ž	0.9 0.8	-	-	-	-	-	0.5	-	-	-	1.7	0.5	0.5	1.4	2.0	0.7	1.9	3.4	0.4
C30	Nosna šupljina i srednje uvo Nasal cavity & middle ear	M Ž	0.4 0.6	-	-	-	-	-	-	-	-	-	0.6	0.5	0.5	0.7	0.8	-	3.8	0.2	
C31	Nosni sinusi Accessory sinuses	M Ž	0.4 0.3	-	-	-	-	0.6	-	-	1.1	-	-	0.5	-	0.8	1.6	2.5	0.2	0.2	
C32	Larings Larynx	M Ž	18.8 2.6	-	-	-	-	-	-	1.6	1.1	5.3	18.8	47.3	48.9	56.4	48.3	46.8	33.8	11.2	
C33	Traheja Trachea	M Ž	0.3 0.1	-	-	-	-	-	-	-	-	-	0.5	1.0	1.5	0.8	0.8	-	0.8	0.2	
C34	Bronh i pluća Bronchus & lung	M Ž	108.0 35.0	-	-	-	-	0.5	2.7	5.7	26.0	74.5	138.0	258.4	341.2	344.8	393.6	285.4	61.4	0.1	
C37	Timus Thymus	M Ž	0.2 0.1	-	-	-	-	-	-	-	-	0.6	-	0.5	-	0.7	-	-	0.6	0.1	
C38	Srce, mediastinum, pleura Heart, mediastinum & pleura	M Ž	0.8 1.0	0.8	-	-	-	-	-	0.5	0.6	0.6	0.5	0.5	0.9	2.0	5.4	1.9	2.1	0.6	
C39	Toraks, druge lokalizacije Other & ill-def. in the res.sys.	M Ž	0.0 0.1	-	-	-	-	-	-	-	-	-	-	-	0.5	1.3	-	-	0.8	0.0	
C40	Kosti i zglob, hrskavice udova Bone & articular cartilage of limbs	M Ž	1.1 0.9	0.7	2.0	2.5	0.6	0.5	1.1	0.6	-	1.1	1.1	0.5	0.9	-	1.5	1.6	3.3	1.9	
C41	Kosti i zglob, hrskav., dr. lok. Bone & articular cartilage of other	M Ž	0.9 1.1	0.7	-	0.6	-	-	0.5	0.5	-	1.1	1.9	3.2	3.3	2.0	1.3	1.7	0.7	0.7	
C43	Koža, maligni melanom Malignant melanoma of skin	M Ž	7.5 7.4	-	-	-	-	1.1	0.5	5.8	5.1	5.9	7.7	10.8	15.3	14.8	18.5	18.1	20.0	4.7	
C44	Koža, drugi mal. tumori Skin, other malignomas	M Ž	62.9 57.2	-	-	-	0.6	1.1	1.6	5.3	6.3	15.4	31.5	44.8	75.1	123.9	212.7	252.3	346.1	32.3	
C45	Mezoteliom Mesothelioma	M Ž	0.7 0.0	-	-	-	-	-	-	-	-	0.6	2.0	1.0	3.0	-	3.3	1.3	0.4	0.0	
C46	Kaposijev sarkom Kaposi's sarcoma	M Ž	0.1 0.1	-	-	-	-	-	-	0.6	-	-	-	-	-	-	-	0.6	0.4	0.1	
C47	Periferni nervi i aut. ner. sis. Peripheral nerves & auton. nerv. sys.	M Ž	0.4 0.2	0.8	-	-	-	-	-	0.6	-	0.6	0.5	0.5	-	-	0.6	-	0.2	0.2	
C48	Peritoneum i retroperitoneum Retroperitoneum & peritoneum	M Ž	0.8 0.9	-	-	-	-	0.6	-	-	-	1.6	0.5	1.4	0.7	1.3	3.9	3.8	0.4	0.5	
C49	Vezivna i meka tkiva, drugi Other connective and soft tissue	M Ž	2.2 2.1	0.7	-	1.2	-	1.6	1.1	1.7	1.8	3.3	3.4	4.4	3.0	1.6	4.1	6.3	1.5	1.4	
C50	Dojka Breast	M Ž	2.0 104.0	-	-	-	-	1.1	4.3	21.8	46.9	108.8	151.4	171.5	197.5	241.4	230.0	212.4	183.8	61.1	

Tabela 19.1 Incidencija od raka na 100.000 stanovnika prema primarnoj lokalizaciji (MKB-10), uzrastu i polu, centralna Srbija, 2008. godina (nastavak)

Table 19.1 Cancer incidence rates per 100.000 population by primary site (ICD-10), age and sex, Central Serbia, 2008 (continued)

MKB-10 (ICD-10) Šifra (Code) Ukupno (All)	Primarna lokalizacija Primary site	POL SEX M (Male) Ž (Female)	Sirova inc. CR 507.7 434.0	U Z R A S T (A g e)																	Stand. inc. ASR 282.6 240.1
				0-4	5-9	10-14	15-19	20-24	25-29	30-34	35-39	40-44	45-49	50-54	55-59	60-64	65-69	70-74	75+		
				11.7	6.5	8.8	24.3	28.8	39.4	51.5	74.9	148.3	308.6	525.2	852.3	1245.5	1580.5	2010.1	1966.2		
C51	Vulva Vulva	Ž	3.4	-	-	-	-	-	-	-	1.1	1.1	1.6	2.4	5.5	5.9	12.1	10.4	11.4	1.6	
C52	Vagina Vagina	Ž	0.9	-	-	-	-	-	-	-	-	-	1.1	0.5	1.4	2.6	2.7	3.2	3.0	0.5	
C53	Grlić materice Cervix uteri	Ž	34.3	-	-	-	-	-	6.5	31.4	44.6	63.0	62.5	64.2	62.9	50.1	42.5	47.3	35.2	23.3	
C54	Materica, telo Corpus uteri	Ž	24.6	-	-	-	-	-	0.5	4.3	4.5	7.4	25.9	39.2	65.7	71.2	60.7	51.1	41.1	13.7	
C55	Materica, neoznačeni deo Uterus, unspecified part	Ž	1.0	-	-	-	-	-	-	-	-	0.6	0.5	0.5	0.5	3.3	-	4.5	4.7	0.4	
C56	Jajnik Ovary	Ž	16.6	-	-	1.4	2.0	6.9	6.0	5.3	5.1	20.6	22.2	23.6	30.1	34.3	40.5	31.1	24.6	10.6	
C57	Ženski gen.org., dr. neoz. lok. Other & unspc.parts of fem. gen.org.	Ž	0.9	-	-	-	-	-	0.5	0.5	0.6	1.1	1.1	0.5	0.9	2.0	0.7	5.8	1.3	0.5	
C58	Placenta Placenta	Ž	0.0	-	-	-	-	-	-	-	-	-	-	-	-	-	-	-	-	0.0	
C60	Penis Penis	M	1.1	-	-	-	-	-	-	-	-	1.2	1.7	1.0	2.5	1.5	1.6	5.8	3.8	0.6	
C61	Prostata Prostate	M	54.8	-	-	-	-	-	0.5	-	-	4.1	3.9	10.3	43.0	112.8	189.3	295.8	351.7	25.9	
C62	Testis Testis	M	4.6	1.5	-	0.7	3.7	8.3	12.2	9.6	10.3	7.1	3.9	4.4	3.5	0.7	-	0.8	0.6	4.5	
C63	Muški gen. org., dr. neoz. org. Other & unspc. male genital organs	M	0.4	-	-	-	-	-	-	-	-	0.6	0.6	-	-	0.7	-	2.5	2.5	0.2	
C64	Bubreg Kidney, except renal pelvis	M	11.2	-	-	-	-	0.6	1.1	0.5	3.4	8.9	7.7	14.8	21.7	29.7	32.2	37.8	33.2	6.5	
C65	Bubrežna karlica Renal pelvis	M	1.1	-	-	-	-	-	-	-	-	-	1.1	0.5	2.5	4.5	5.6	2.5	2.5	0.6	
C66	Ureter Ureter	M	0.7	-	-	-	-	-	-	-	-	-	-	0.5	0.5	0.7	4.0	0.8	5.0	0.3	
C67	Mokraćna bešika Bladder	M	30.8	-	-	-	-	-	3.2	1.1	2.3	10.0	16.0	25.1	49.9	75.7	84.6	123.3	148.3	16.3	
C68	Urinarni organi, dr. neoz. org. Other & unspecified urinary organs	M	0.1	-	-	-	-	-	-	-	-	-	-	-	-	-	-	1.6	-	0.0	
C69	Oko, pripojci oka Eye and adnexa	M	1.1	0.7	-	-	-	-	-	-	1.1	1.2	1.1	0.5	1.5	1.5	1.6	3.3	6.3	0.7	
C70	Moždanice Meninges	M	0.6	-	-	0.7	-	-	-	0.5	0.6	-	1.1	1.5	0.5	0.7	0.8	3.3	0.6	0.4	
C71	Mozak Brain	M	11.1	2.9	0.7	-	6.2	3.3	3.2	3.7	5.1	6.5	14.9	15.3	21.2	28.9	22.6	30.4	18.8	7.8	
C72	Centralni ner. sis., dr. delovi Spinal cord, cran. nerv. & oth. parts of CNS	M	0.5	-	-	-	-	-	0.5	-	-	-	0.6	1.5	0.5	2.2	-	2.5	0.6	0.3	
C73	Štitasta žlezda Thyroid gland	M	1.5	-	-	-	-	-	0.5	0.5	0.6	2.4	1.1	2.5	4.4	5.2	2.4	0.8	2.5	1.0	
C74	Nadbubrežna žlezda Adrenal gland	M	0.6	-	1.4	-	-	-	-	-	-	-	1.1	0.5	1.0	1.5	3.2	0.8	0.6	0.5	
C75	Endokrine žlezde, druge Other endocrine glands & related structures	M	0.2	-	-	-	-	-	-	-	-	-	-	1.0	0.5	-	-	0.8	0.6	0.1	
C76	Ostale lokalizacije Other & ill defined sites	M	1.6	-	-	-	-	-	-	-	-	0.6	-	1.0	4.4	3.7	4.0	4.9	8.1	0.8	
C77-C80	Sekundarne lok., bez ozn. lok. Unspc mal.neo.of lymph nod.&without of spec	M	10.6	2.2	-	2.7	0.6	1.7	1.1	1.1	1.1	3.0	8.8	10.8	18.3	20.0	26.6	40.3	43.8	6.2	
C81	Hodgkinova bolest Hodgkin's disease	M	2.9	0.7	-	0.7	4.4	3.9	4.8	3.2	1.7	0.6	3.9	3.4	1.5	4.5	4.8	8.2	1.9	2.6	
C82	Ne-Hodgkinov lim., folikularni Follicular non-Hodgkin's lymphoma	M	0.7	-	-	-	-	-	0.5	0.5	0.6	1.8	0.6	0.5	1.5	0.7	-	3.3	1.3	0.5	
C83	Ne-Hodgkinov lim., difuzni Diffuse non-Hodgkin's lymphoma	M	1.8	-	-	0.7	-	0.6	-	1.1	0.6	0.6	2.2	2.5	3.0	4.5	4.8	9.0	1.3	1.1	
C84	Periferni i kožni lim. T-ćelija Peripheral & cutaneous T-cell lymphomas	M	0.2	-	-	-	-	-	-	-	-	0.6	0.6	1.0	-	-	-	0.8	0.6	0.1	
C85	Ne-Hodgkinovi limfomi, drugi Other & unspc. types of non-Hodgkin's lymph	M	3.9	-	-	1.4	-	2.8	1.1	0.5	1.7	0.6	3.9	2.5	6.4	8.2	9.7	11.5	15.6	2.4	
C88	Zloćudne imunoprolifer. bolesti Malignant immunoproliferative diseases	M	0.1	-	-	-	-	-	-	-	-	-	-	-	0.5	-	-	0.8	0.8	-	
C90	Mult. mijelom i zloć. tum. plaz. ćel. Multiple myeloma and malignant plasma cell n	M	2.2	-	-	-	-	-	-	-	1.1	1.2	2.2	1.0	4.0	6.7	9.7	5.8	6.9	1.3	
C91	Limfoidna leukemija Lymphoblastic, lymphoid leukaemia	M	4.2	2.2	2.2	-	1.2	-	1.1	-	2.3	0.6	1.7	2.5	5.9	9.6	8.1	17.3	19.4	2.7	
C92	Mijeloidna leukemija Myeloid leukaemia	M	2.7	-	-	-	1.2	-	0.5	1.1	1.7	1.2	1.1	2.0	6.4	3.7	9.7	11.5	6.9	1.6	
C93	Monocitna leukemija Monocytic leukaemia	M	0.0	-	-	-	-	-	-	0.5	-	-	-	-	-	-	-	-	-	0.0	
C94	Leukemije, druge Other leukaemias of specified cells	M	0.2	-	-	-	-	-	-	-	-	-	-	-	1.0	1.5	-	-	-	0.1	
C95	Leukemije, neoznačene Leukaemia, unspecified cell type	M	1.0	-	-	-	-	-	0.5	1.1	0.6	0.6	1.7	1.0	1.5	0.7	3.2	0.8	3.8	0.6	
C96	Dr. zloć. tum. hematop. sist. Other&unsp.mal.neo.of lym.haem.& tissue	M	0.0	-	-	-	-	-	-	-	-	-	-	-	-	-	-	-	-	0.0	
C00-C96 (C44)	Sve lokalizacije, bez kože All sites but skin	M	444.8	11.7	6.5	8.8	23.6	27.6	37.8	46.2	68.7	133.0	277.1	480.4	777.2	1121.6	1367.8	1757.8	1717.8	252.2	
		Ž	376.8	9.3	7.6	10.8	15.6	28.7	41.9	111.3	152.5	287.4	419.3	526.7	693.7	819.8	849.8	890.2	836.9	215.0	

Tabela 20. Broj umrlih slučajeva od raka, prema primarnoj lokalizaciji (MKB-10), uzrastu i polu, centralna Srbija, 2008. godina

Table 20. Number of cancer deaths by primary site (ICD-10), age and sex, Central Serbia, 2008

MKB-10 (ICD-10) Šifra (Code) Ukupno (All)	Primarna lokalizacija Primary site	POL SEX M (Male) Ž (Female)	Ukupno (All) 8338	0-4 7	5-9 5	10-14 3	15-19 10	20-24 11	25-29 10	30-34 27	35-39 45	40-44 122	45-49 283	50-54 585	55-59 1078	60-64 970	65-69 1157	70-74 1548	75+ 2477	% 100.0%
C00	Usna Lip	M Ž	22 3	- -	- -	- -	- -	- -	- -	- -	- -	1 -	- -	1 2	2 3	3 4	4 11	11 1	11 0.3%	
C01	Jezik, koren Base of tongue	M Ž	19 5	- -	- -	- -	- -	- -	- -	- -	- -	1 1	3 4	4 1	1 1	3 4	4 2	2 0.2%		
C02	Jezik, drugi delovi Tongue, other & unspecified parts	M Ž	33 6	- -	- -	- -	- -	- -	- -	- -	- -	3 1	3 2	4 5	5 5	2 1	4 2	7 0.4%		
C03	Desni Gum	M Ž	1 0	- -	- -	- -	- -	- -	- -	- -	- -	- -	- -	- -	- -	- -	- -	- -	0.0%	
C04	Pod usta Floor of mouth	M Ž	15 3	- -	- -	- -	- -	- -	- -	- -	- -	- -	2 4	2 2	2 1	1 1	1 1	3 0.2%		
C05	Nepce Palate	M Ž	9 2	- -	- -	- -	- -	- -	- -	- -	- -	- -	4 1	1 1	2 1	2 1	- -	- -	0.1%	
C06	Usta, drugi delovi Mouth, other & unspecified parts	M Ž	5 4	- -	- -	- -	- -	- -	- -	- -	- -	- -	- -	1 1	1 2	- -	- -	1 0.1%		
C07	Parotidna žlezda Parotid gland	M Ž	15 8	- -	- -	- -	1 -	- -	- -	- -	- -	- -	1 -	3 1	1 1	5 3	3 0.2%			
C08	Pljuvačna žlezda Other & unsp. major salivary gl.	M Ž	7 4	- -	- -	- -	- -	- -	- -	- -	1 -	- -	- -	- -	- -	- -	3 3	3 0.1%		
C09	Krajnik Tonsil	M Ž	17 8	- -	- -	- -	- -	- -	- -	- -	- -	- -	2 1	2 2	4 1	2 5	5 0.2%			
C10	Orofarinjski Oropharynx	M Ž	22 4	- -	- -	- -	- -	- -	- -	- -	- -	- -	2 1	4 1	4 3	2 2	3 4	4 0.3%		
C11	Nasofarjnijski Nasopharynx	M Ž	8 4	- -	- -	- -	- -	- -	- -	1 -	- -	- -	- -	3 -	- -	- -	3 1	1 0.1%		
C12	Piriformni sinus Piriform sinus	M Ž	1 0	- -	- -	- -	- -	- -	- -	- -	- -	- -	- -	- -	- -	- -	- -	1 0.0%		
C13	Hipofarjnijski Hypopharynx	M Ž	48 11	- -	- -	- -	- -	- -	- -	- -	1 -	2 -	8 -	11 -	7 -	12 -	5 -	2 0.6%		
C14	Usne, usta, ždrelo, drugi delovi Other and ill def. sites in the lip, oral cavity & pharynx	M Ž	14 6	- -	- -	- -	- -	- -	- -	- -	- -	- -	- -	3 1	1 1	3 2	4 2	4 0.2%		
C15	Jednjak Oesophagus	M Ž	136 44	- -	- -	- -	- -	- -	- -	2 -	- -	4 -	13 -	23 5	25 8	20 4	21 12	28 10	1.6%	
C16	Želudac Stomach	M Ž	506 283	- -	- -	- -	1 -	- -	- -	3 2	4 2	9 16	16 28	52 43	78 83	103 47	169 124	6.1%		
C17	Tanko crevo Small intestine	M Ž	17 17	- -	- -	- -	- -	- -	- -	- -	1 -	1 1	1 1	1 2	3 -	4 4	4 8	4 0.2%		
C18	Debelo crevo Colon	M Ž	533 426	- -	- -	- -	1 -	- -	- -	5 4	2 7	9 10	13 23	27 45	51 40	64 40	120 82	188 174	6.4%	
C19	Rektosigmoidni prelaz Rectosigmoid junction	M Ž	34 32	- -	- -	- -	- -	- -	- -	- -	- -	1 -	2 -	4 5	7 5	7 13	13 0.4%			
C20	Rektum Rectum	M Ž	428 295	- -	- -	- -	- -	- -	- -	- -	1 -	3 7	14 25	30 31	57 49	86 134	146 4.7%			
C21	Anus i analni kanal Anus & anal canal	M Ž	6 7	- -	- -	- -	- -	- -	- -	- -	- -	- -	2 -	1 -	- -	- -	2 4	4 0.1%		
C22	Jetra, žučni kanali Liver & intrahepatic bile ducts	M Ž	327 203	1 -	- -	- -	- -	1 -	1 -	1 4	1 10	4 24	10 41	24 37	41 37	46 37	56 45	105 75	3.9%	
C23	Žučna kesica Gallbladder	M Ž	37 87	- -	- -	- -	- -	- -	- -	- -	- -	- -	2 -	4 9	3 12	7 17	6 37	15 1.4%		
C24	Žučni kanali, drugi delovi Biliary tract, other & unsp. parts	M Ž	36 31	- -	- -	- -	- -	- -	- -	1 -	- -	1 2	3 5	2 2	5 7	5 17	14 0.4%			
C25	Pankreas Pancreas	M Ž	426 354	- -	- -	- -	1 -	1 -	- -	3 1	10 5	9 15	25 25	54 35	66 50	102 69	120 155	5.1%		
C26	Org. za var., ned. odrež. lok. Other & ill-def. digestive organs	M Ž	12 24	- -	- -	- -	- -	- -	- -	- -	1 -	- -	1 4	- -	2 -	2 3	15 0.4%			
C30	Nosna šupljina i srednje uvo Nasal cavity & middle ear	M Ž	7 13	- -	- -	- -	- -	- -	- -	- -	- -	- -	1 1	1 2	1 2	1 8	2 0.2%			
C31	Nosni sinusi Accessory sinuses	M Ž	8 5	- -	- -	- -	- -	- -	- -	- -	- -	- -	3 1	1 -	- -	2 1	2 0.1%			
C32	Larings Larynx	M Ž	267 38	- -	- -	- -	- -	- -	- -	- -	1 -	2 1	11 4	21 6	42 7	38 7	40 6	72 7	3.2%	
C33	Traheja Trachea	M Ž	10 3	- -	- -	- -	- -	- -	- -	- -	- -	- -	2 -	3 -	3 2	- -	- -	0.1%		
C34	Bronh i pluća Bronchus & lung	M Ž	2576 829	- -	- -	1 -	- -	1 -	3 2	5 14	36 45	99 104	219 131	458 89	392 107	381 117	443 216	538 13.1%		
C37	Timus Thymus	M Ž	1 2	- -	- -	- -	- -	- -	- -	- -	- -	- -	1 -	- -	- -	- -	- -	- -	0.0%	
C38	Srce, mediastinum, pleura Heart, mediastinum & pleura	M Ž	33 22	- -	- -	1 -	- -	- -	- -	- -	- -	1 1	2 2	2 1	3 4	4 7	8 0.3%			
C39	Toraks, druge lokalizacije Other & ill-def. in the res. sys.	M Ž	2 3	- -	- -	- -	- -	- -	- -	- -	- -	- -	- -	- -	- -	- -	- -	2 0.0%		
C40	Kosti i zglobovi hrskavice udova Bone & articular cartilage of limbs	M Ž	19 16	- -	- -	3 1	- -	- -	- -	2 -	- -	1 -	3 -	- -	1 3	2 3	4 3	4 0.2%		
C41	Kosti i zglobovi hrskav., dr. lok. Bone & articular cartilage of other	M Ž	31 18	- -	- -	- -	- -	- -	- -	2 -	1 1	1 2	1 2	5 1	2 1	3 3	7 6	9 0.4%		
C43	Koža, maligni melanom Malignant melanoma of skin	M Ž	123 69	- -	- -	- -	- -	1 -	- -	2 2	3 6	7 6	15 9	15 5	11 3	18 7	25 23	1.5%		
C44	Koža, drugi mal. tumori Skin, other malignomas	M Ž	60 65	- -	- -	- -	1 -	- -	- -	- -	- -	2 1	4 3	2 3	2 3	9 4	35 50	0.7%		
C45	Mezoteliom Mesothelioma	M Ž	18 8	- -	- -	- -	- -	- -	- -	- -	- -	1 -	4 -	2 2	4 2	3 4	4 3	0.2%		
C46	Kaposijev sarkom Kaposi's sarcoma	M Ž	0 4	- -	- -	- -	- -	- -	- -	- -	- -	- -	- -	- -	- -	- -	- -	1 2	0.0%	
C47	Periferni nervi i aut. ner. sis. Peripheral nerves & auton. nerv. sys.	M Ž	1 4	- -	- -	- -	- -	- -	- -	- -	- -	1 -	- -	- -	1 -	- -	1 1	1 0.1%		
C48	Peritoneum i retroperitoneum Retroperitoneum & peritoneum	M Ž	30 32	- -	- -	- -	1 -	- -	- -	- -	1 1	1 2	2 3	3 7	5 9	6 9	9 0.4%			
C49	Vezivna i meka tkiva, drugi Other connective and soft tissue	M Ž	25 18	- -	2 -	- -	- -	1 -	1 -	1 2	4 2	2 5	2 3	3 3	3 2	2 3	4 3	0.3%		
C50	Dojka Breast	M Ž	24 1121	- -	1 -	- -	- -	- -	1 -	7 17	30 63	104 152	152 130	138 170	308 170	308 170	17.7%			

Tabela 20.1 Broj umrlih slučajeva od raka, prema primarnoj lokalizaciji (MKB-10), uzrastu i polu, centralna Srbija, 2008. godina (nastavak)

Table 20.1 Number of cancer deaths by primary site (ICD-10), age and sex, Central Serbia, 2008 (continued)

MKB-10 (ICD-10) Šifra (Code)	Primarna lokalizacija Primary site	POL SEX	Ukupno (All)	U Z R A S T (A g e)																% 100.0%		
				0-4	5-9	10-14	15-19	20-24	25-29	30-34	35-39	40-44	45-49	50-54	55-59	60-64	65-69	70-74	75+			
Ukupno (All)		M (Male) Ž (Female)	8338 6317	7	5	3	10	11	10	27	45	122	283	585	1078	970	1157	1548	2477			
C51	Vulva Vulva	Ž	43	-	-	-	-	-	-	-	-	-	-	2	2	-	2	4	3	7	23	0.7%
C52	Vagina Vagina	Ž	13	-	-	-	-	-	-	-	-	-	-	-	1	-	2	3	-	4	3	0.2%
C53	Grlić materice Cervix uteri	Ž	389	-	-	-	-	-	1	7	7	24	40	46	59	51	33	42	79		6.2%	
C54	Materica, telo Corpus uteri	Ž	94	-	-	-	-	-	-	-	-	-	1	3	3	12	14	11	22	28	1.5%	
C55	Materica, neoznačeni deo Uterus, unspecified part	Ž	122	-	-	-	2	1	2	1	2	3	10	18	17	18	14	34		1.9%		
C56	Jajnik Ovary	Ž	282	-	-	1	-	1	1	2	5	7	17	27	37	33	48	40	63	4.5%		
C57	Ženski gen.org., dr. neoz. lok. Other & unsp. parts of fem. gen.org.	Ž	15	-	-	-	-	-	-	-	1	-	2	1	1	-	-	5	5	0.2%		
C58	Placenta Placenta	Ž	0	-	-	-	-	-	-	-	-	-	-	-	-	-	-	-	-	0.0%		
C60	Penis Penis	M	15	-	-	-	-	-	-	-	-	-	-	-	2	1	1	1	3	7	0.2%	
C61	Prostata Prostate	M	696	-	-	-	-	-	-	-	-	-	1	2	7	18	35	71	153	409	8.3%	
C62	Testis Testis	M	12	-	-	-	1	-	2	-	2	1	1	1	2	-	-	-	2	0.1%		
C63	Muški gen.org., dr. neoz. org. Other & unsp. male genital organs	M	4	-	-	-	-	-	-	-	-	-	-	-	1	1	-	-	2	0.0%		
C64	Bubreg Kidney, except renal pelvis	M Ž	177 96	-	-	-	-	-	1	1	1	6	12	18	20	26	17	30	47	2.1%		
C65	Bubrežna karlica Renal pelvis	M Ž	7 12	-	-	-	-	-	-	-	-	-	1	-	-	-	2	2	2	0.1%		
C66	Ureter Ureter	M Ž	7 7	-	-	-	-	-	-	-	-	-	1	-	-	-	1	1	4	0.1%		
C67	Mokraćna bešika Bladder	M Ž	291 96	-	-	-	-	-	-	-	-	1	3	11	15	26	41	58	136	3.5%		
C68	Urinarni organi, dr. neoz. org. Other & unspecified urinary organs	M Ž	6 0	-	-	-	-	-	-	-	-	-	1	-	-	-	2	2	1	0.1%		
C69	Oko, pripoji oka Eye and adnexa	M Ž	8 4	-	-	-	-	-	-	-	-	-	-	1	-	1	2	4	4	0.1%		
C70	Moždance Meninges	M Ž	12 11	-	-	-	-	-	-	-	-	-	-	1	3	1	5	2	4	0.1%		
C71	Mozak Brain	M Ž	255 210	5	3	1	1	-	-	-	8	8	14	27	32	37	35	42	42	3.1%		
C72	Centralni ner. sis., dr. delovi Spinal cord, cran. nerv. & oth. parts of CNS	M Ž	8 6	-	-	-	-	-	-	-	-	-	1	3	1	2	-	1	-	0.1%		
C73	Štitasta žlezda Thyroid gland	M Ž	16 35	-	-	-	-	-	-	-	-	1	-	1	4	2	5	3	1	0.2%		
C74	Nadbubrežna žlezda Adrenal gland	M Ž	15 11	-	-	-	-	-	-	-	-	-	-	1	1	3	1	-	4	0.2%		
C75	Endokrine žlezde, druge Other endocrine glands & related structures	M Ž	7 5	-	-	-	-	-	-	-	-	-	-	1	1	-	-	3	2	0.1%		
C76	Ostale lokalizacije Other & ill defined sites	M Ž	73 110	-	-	-	1	-	-	1	-	3	5	11	5	11	10	26	0.9%			
C77-C80	Sekundarne lok., bez ozn. lok. Unspec. mal. neo. of lymph nod. & without of spec. of site	M Ž	311 273	-	1	-	-	-	-	1	2	19	22	40	26	44	71	84	3.7%			
C81	Hodgkinova bolest Hodgkin's disease	M Ž	34 16	-	-	-	2	-	2	2	1	2	1	3	3	7	3	4	6	0.4%		
C82	Ne-Hodgkinov lim., folikularni Follicular non-Hodgkin's lymphoma	M Ž	16 9	-	-	-	-	-	-	-	-	1	-	1	3	2	2	4	4	0.2%		
C83	Ne-Hodgkinov lim., difuzni Diffuse non-Hodgkin's lymphoma	M Ž	30 32	-	-	-	-	-	1	1	1	1	-	1	2	1	5	6	13	0.5%		
C84	Periferni i kožni lim. T-ćelija Peripheral & cutaneous T-cell lymphomas	M Ž	4 0	-	-	-	-	-	-	-	-	-	-	-	-	-	1	2	1	0.0%		
C85	Ne-Hodgkinovi limfomi, drugi Other & unsp. types of non-Hodgkin's lymph	M Ž	79 56	1	-	-	2	3	1	3	-	3	4	3	15	6	12	11	15	0.9%		
C88	Zloćudne imunoprolifer. bolesti Malignant immunoproliferative diseases	M Ž	1 2	-	-	-	-	-	-	-	-	-	-	-	-	-	1	-	-	0.0%		
C90	Mult. mijelom i zloć. tum. plaz. ćel. Multiple myeloma and malignant plasma cell n	M Ž	65 63	-	-	-	-	-	-	-	-	-	1	4	15	9	8	14	14	0.8%		
C91	Limfoidna leukemija Lymphoblastic, lymphoid leukaemia	M Ž	98 68	-	-	-	1	-	1	-	1	4	2	3	12	8	14	13	39	1.2%		
C92	Mijeloidna leukemija Myeloid leukaemia	M Ž	91 76	-	1	-	-	-	2	1	-	2	5	4	18	4	16	12	26	1.1%		
C93	Monocitna leukemija Monocytic leukaemia	M Ž	13 0	-	-	-	-	-	-	-	-	1	2	1	3	2	-	2	2	0.2%		
C94	Leukemije, druge Other leukaemias of specified cells	M Ž	1 5	-	-	-	-	-	-	-	-	-	-	1	1	1	-	-	2	0.1%		
C95	Leukemije, neoznačene Leukaemia, unspecified cell type	M Ž	13 13	-	-	-	-	-	-	-	-	-	-	1	-	1	1	5	5	0.2%		
C96	Dr. zloć. tum. hematop. sist. Other & unsp. mal. neo. of lym., haem. & tissue	M Ž	4 2	-	-	-	-	-	-	-	-	-	-	-	-	1	-	1	2	0.0%		
C00-C96 (C44)	Sve lokalizacije, bez kože All sites but skin	M Ž	8278 6252	7	5	3	10	10	10	26	45	122	281	581	1076	968	1148	1544	2442	99.3%		

Tabela 21.1 Mortalitet od raka na 100.000 stanovnika prema primarnoj lokalizaciji (MKB-10),uzrastu i polu, centralna Srbija, 2008. godina (nastavak)

Table 21.1 Cancer mortality rates per 100.000 population by primary site (ICD-10), age and sex, Central Serbia, 2008 (continued)

MKB-10 (ICD-10) Šifra (Code) Ukupno (All)	Primarna lokalizacija Primary site	POL SEX M (Male) Ž (Female)	Sirovi mort. CR 319.2 229.0	U Z R A S T (A g e)																	Stand. mort. ASR 167.6 107.7	
				0-4	5-9	10-14	15-19	20-24	25-29	30-34	35-39	40-44	45-49	50-54	55-59	60-64	65-69	70-74	75+			
				5.1	3.6	2.0	6.2	6.1	5.3	14.3	25.7	72.1	156.2	288.2	532.6	719.6	932.0	1272.1	1550.1			
C51	Vulva Vulva	Ž	1.6	-	-	-	-	-	-	-	-	-	1.1	1.1	-	0.9	2.6	2.0	4.5	9.7	0.6 0.0	
C52	Vagina Vagina	Ž	0.5	-	-	-	-	-	-	-	-	-	0.5	-	0.9	2.0	-	2.6	1.3	0.2 0.0		
C53	Grlić materice Cervix uteri	Ž	14.1	-	-	-	-	-	0.5	3.7	4.0	13.7	21.2	21.7	27.3	33.6	22.3	27.2	33.5	8.0 0.0		
C54	Materica, telo Corpus uteri	Ž	3.4	-	-	-	-	-	-	-	-	-	0.6	1.6	1.4	5.5	9.2	7.4	14.2	11.9	1.5 0.0	
C55	Materica, neoznačeni deo Uterus, unspecified part	Ž	4.4	-	-	-	-	1.1	0.5	1.1	0.6	1.1	1.6	4.7	8.3	11.2	12.1	9.1	14.4	2.2 0.0		
C56	Jajnik Ovary	Ž	10.2	-	-	0.7	-	0.6	0.5	1.1	2.8	4.0	9.0	12.8	17.1	21.8	32.4	25.9	26.7	5.4 0.0		
C57	Ženski gen.org., dr. neoz. lok. Other & unspc.parts of fem. gen.org.	Ž	0.5	-	-	-	-	-	-	-	0.6	-	1.1	0.5	0.5	-	-	3.2	2.1	0.2 0.0		
C58	Placenta Placenta	Ž	0.0	-	-	-	-	-	-	-	-	-	-	-	-	-	-	-	-	0.0 0.0		
C60	Penis Penis	M	0.6	-	-	-	-	-	-	-	-	-	-	-	-	1.0	0.5	0.7	0.8	2.5	4.4	0.3 0.0
C61	Prostata Prostate	M	26.6	-	-	-	-	-	-	-	-	-	0.6	1.1	3.4	8.9	26.0	57.2	125.7	255.9	11.0 0.0	
C62	Testis Testis	M	0.5	-	-	-	0.6	-	1.1	-	1.1	0.6	0.6	0.5	1.0	-	-	-	1.3	0.4	0.4 0.0	
C63	Muški gen. org., dr. neoz. org. Other & unspc. male genital organs	M	0.2	-	-	-	-	-	-	-	-	-	-	-	0.5	0.7	-	-	1.3	0.1	0.1 0.0	
C64	Bubreg Kidney, except renal pelvis	M Ž	6.8 3.5	-	-	-	-	-	-	-	0.6	3.5	6.6	8.9	9.9	19.3	13.7	24.7	29.4	3.7 1.5		
C65	Bubrežna karlica Renal pelvis	M Ž	0.3 0.4	-	-	-	-	-	-	-	-	-	0.6	-	-	-	1.6	1.6	1.3	0.1 0.2		
C66	Ureter Ureter	M Ž	0.3 0.3	-	-	-	-	-	-	-	-	-	0.6	-	-	-	0.8	0.8	2.5	0.1 0.1		
C67	Mokraćna bešika Bladder	M Ž	11.1 3.5	-	-	-	-	-	-	-	-	-	0.6	1.7	5.4	7.4	19.3	33.0	47.7	5.1 1.3		
C68	Urinarni organi, dr. neoz. org. Other & unspecified urinary organs	M Ž	0.2 0.0	-	-	-	-	-	-	-	-	-	0.6	-	-	-	-	1.6	1.6	0.6	0.1 0.0	
C69	Oko, pripoji oka Eye and adnexa	M Ž	0.3 0.1	-	-	-	-	-	-	-	-	-	-	-	0.5	-	0.8	1.6	2.5	0.1 0.0		
C70	Mozdanice Meninges	M Ž	0.5 0.4	-	-	-	-	-	-	-	-	-	-	-	0.5	-	2.2	0.8	4.1	1.3	0.2 0.2	
C71	Mozak Brain	M Ž	9.8 7.6	3.7	2.2	0.7	0.6	-	-	4.6	4.7	7.7	13.3	15.8	27.4	28.2	34.5	26.3	6.3	6.3 1.4		
C72	Centralni ner. sis., dr. delovi Spinal cord, cran. nerv. & oth. parts of CNS	M Ž	0.3 0.2	-	-	-	-	-	-	-	0.5	-	0.6	1.5	0.5	1.5	-	0.8	-	0.2 0.2		
C73	Štitasta žlezda Thyroid gland	M Ž	0.6 1.3	-	-	-	-	-	-	-	-	-	-	0.5	2.0	1.5	4.0	2.5	0.6	0.3 0.2		
C74	Nadbubrežna žlezda Adrenal gland	M Ž	0.6 0.4	-	0.8	-	-	-	-	-	-	-	-	0.5	0.5	2.0	0.7	-	1.7	0.3 0.1		
C75	Endokrine žlezde, druge Other endocrine glands & related structures	M Ž	0.3 0.2	-	-	-	-	-	-	-	-	-	-	0.5	0.5	-	-	2.5	1.3	0.1 0.1		
C76	Ostale lokalizacije Other & ill defined sites	M Ž	2.8 4.0	-	-	-	-	0.7	-	0.5	-	0.6	-	1.7	2.5	5.4	3.7	8.9	8.2	16.3 1.6		
C77-C80	Sekundarne lok., bez ozn. lok. Unspc mal.neo.of lymph nod.&without of spec.of site	M Ž	11.9 9.9	0.7	-	-	0.6	-	-	0.5	1.6	2.3	0.6	3.2	8.0	13.9	20.4	17.5	36.3	6.2 4.5		
C81	Hodgkinova bolest Hodgkin's disease	M Ž	1.3 0.6	-	-	-	-	1.1	-	0.5	1.1	1.2	0.6	1.5	1.5	5.2	2.4	3.3	3.8	0.8 0.4		
C82	Ne-Hodgkinov lim., folikularni Follicular non-Hodgkin's lymphoma	M Ž	0.6 0.3	-	-	-	-	-	-	-	-	-	0.6	-	1.5	1.5	1.6	3.3	2.5	0.3 0.2		
C83	Ne-Hodgkinov lim., difuzni Diffuse non-Hodgkin's lymphoma	M Ž	1.1 1.2	-	-	-	-	-	0.5	0.5	0.6	0.6	-	0.5	0.9	0.7	3.4	3.9	5.5	0.6 0.5		
C84	Periferni i kožni lim. T-ćelija Peripheral & cutaneous T-cell lymphomas	M Ž	0.2 0.0	-	-	-	-	-	-	-	-	-	-	-	-	-	-	0.8	1.6	0.6 0.0		
C85	Ne-Hodgkinovi limfomi, drugi Other & unspc. types of non-Hodgkin's lymph	M Ž	3.0 2.0	0.7	-	-	1.2	1.7	0.5	1.6	-	1.8	2.2	1.5	7.4	4.5	9.7	9.0	9.4	1.9 0.9		
C88	Zloćudne imunoprolifer. bolesti Malignant immunoproliferative diseases	M Ž	0.0 0.1	-	-	-	-	-	-	-	-	-	-	-	-	-	0.7	0.6	-	0.0 0.0		
C90	Mult. mijelom i zloć. tum. plaz. ćel. Multiple myel. and malign. plasma cell neoplasm	M Ž	2.5 2.3	-	-	-	-	-	-	-	-	-	0.6	1.1	1.4	5.1	3.3	8.8	7.1	8.8 1.0		
C91	Limfoidna leukemija Lymphoblastic, lymphoid leukaemia	M Ž	3.8 2.5	-	-	-	0.6	-	0.5	0.6	2.4	1.1	1.5	5.9	5.9	11.3	10.7	24.4	1.9	1.9 1.1		
C92	Mijeloidna leukemija Myeloid leukaemia	M Ž	3.5 2.8	-	0.7	-	-	-	1.1	0.5	-	1.2	2.8	2.0	8.9	3.0	12.9	9.9	16.3	1.9 1.5		
C93	Monocitna leukemija Monocytic leukaemia	M Ž	0.5 0.0	-	-	-	-	-	-	-	-	-	0.6	1.1	0.5	1.5	1.5	-	1.6	1.3 0.0		
C94	Leukemije, druge Other leukaemias of specified cells	M Ž	0.0 0.2	-	-	-	-	-	-	-	-	-	-	0.5	-	0.5	0.7	-	0.8	0.0 0.1		
C95	Leukemije, neoznačene Leukaemia, unspecified cell type	M Ž	0.5 0.5	-	-	-	-	-	-	-	-	-	-	-	0.5	-	0.7	0.7	3.2	2.5 0.2		
C96	Dr. zloć. tum. hematop. sist. Other&unsp.mal.neo.of lym.,haem.& tissue	M Ž	0.2 0.1	-	-	-	-	-	-	-	-	-	-	-	-	0.7	-	0.8	1.3	0.1 0.0		
C00-C96 (C44)	Sve lokalizacije, bez kože All sites but skin	M Ž	316.9 226.6	5.1	3.6	2.0	6.2	5.5	5.3	13.8	25.7	72.1	155.1	286.3	531.6	718.1	924.8	1268.8	1528.2	166.6 107.0		

Tabela 22. Ukupan broj novoobolelih, broj i procenat histološki i citološki verifikovanih slučajeva raka prema primarnoj lokalizaciji i polu, centralna Srbija, 2008. godina

Table 22. Total number of new cancer cases, number and percentage of histologically and cytologically confirmed cancer cases by primary site and sex, Central Serbia 2008

MKB-10 (ICD-10) Šifra (Code)	Primarna lokalizacija Primary site	POL (SEX) M (Male) Z (Female)	Ukupan broj novoobolelih All new cases		Broj histo. / cito. verifikovanih Number of cases histo./ cyto. confirmed		%
			13261	11974	11521	10449	
C00	Usna Lip	M Ž	75 33		70 30		86.9% 87.3%
C01	Jezik, koren Base of tongue	M Ž	30 12		29 9		96.7% 75.0%
C02	Jezik, drugi delovi Tongue, other & unspecified parts	M Ž	44 6		31 7		70.5% 116.7%
C03	Desni Gum	M Ž	5 1		4 1		80.0% 100.0%
C04	Pod usta Floor of mouth	M Ž	42 10		25 4		59.5% 40.0%
C05	Nepece Palate	M Ž	17 9		14 6		82.4% 66.7%
C06	Usta, drugi delovi Mouth, other & unspecified parts	M Ž	16 13		10 7		62.5% 53.8%
C07	Parotidna žlezda Parotid gland	M Ž	36 19		21 11		58.3% 57.9%
C08	Pijuvna žlezda Other & unspec. major salivary gl.	M Ž	14 7		6 2		42.9% 28.6%
C09	Krajnik Tonsil	M Ž	29 12		28 10		96.6% 83.3%
C10	Orofarings Oropharynx	M Ž	26 6		12 4		46.2% 66.7%
C11	Nasofarings Nasopharynx	M Ž	15 14		11 8		73.3% 57.1%
C12	Piriformni sinus Pyriform sinus	M Ž	4 0		2 0		50.0% 0.0%
C13	Hipofarings Hypopharynx	M Ž	53 13		50 10		94.3% 76.9%
C14	Usne, usta, ždrel, drugi delovi Other & ill def. sites in the lip oral cavity & pharynx	M Ž	12 6		7 2		58.3% 33.3%
C15	Jednjak Oesophagus	M Ž	117 48		115 35		98.3% 72.9%
C16	Želudac Stomach	M Ž	609 329		598 299		98.2% 90.9%
C17	Tanko crevo Small intestine	M Ž	28 31		11 10		39.3% 32.3%
C18	Debelo crevo Colon	M Ž	917 548		753 506		82.1% 92.3%
C19	Rektosigmoidni prelaz Rectosigmoid junction	M Ž	138 71		99 70		71.7% 98.6%
C20	Rektum Rectum	M Ž	852 430		630 385		73.9% 89.5%
C21	Anus i analni kanal Anus & anal canal	M Ž	25 17		15 10		60.0% 58.8%
C22	Jetra, žučni kanali Liver & intrahepatic bile ducts	M Ž	305 186		253 158		83.0% 84.9%
C23	Žučna kesha Gallbladder	M Ž	44 82		20 65		45.5% 79.3%
C24	Žučni kanali, drugi delovi Biliary tract, other & unspec. parts	M Ž	31 30		27 23		87.1% 76.7%
C25	Pankreas Pancreas	M Ž	356 234		261 189		73.3% 80.8%
C26	Org. za var., neodrež. lok. Other & ill-defined digestive organs	M Ž	24 23		10 20		41.7% 87.0%
C30	Nosna šupljina i srednje uvo Nasal cavity & middle ear	M Ž	11 16		10 2		90.9% 12.5%
C31	Nosni sinusi Accessory sinuses	M Ž	11 9		10 4		90.9% 44.4%
C32	Larings Larynx	M Ž	490 73		480 70		98.0% 95.9%
C33	Traheja Trachea	M Ž	7 4		5 3		71.4% 75.0%
C34	Bronh i pluća Bronchus & lung	M Ž	2821 965		2539 800		90.0% 82.9%
C37	Timus Thymus	M Ž	4 2		2 1		50.0% 50.0%
C38	Srce, mediastinum, pleura Heart, mediastinum & pleura	M Ž	22 27		24 17		109.1% 63.0%
C39	Toraks, druge lokalizacije Other & ill-def. in the res. sys. & intrath. org.	M Ž	1 3		2 2		200.0% 66.7%
C40	Kosti i zglob. hrskavice udova Bone & articular cartilage of limbs	M Ž	30 24		25 21		83.3% 87.5%
C41	Kosti i zglob. hrskav., dr. lok. Bone & artic. cart. of other & unspec. parts	M Ž	24 30		40 30		166.7% 100.0%
C43	Koža, maligni melanom Malignant melanoma of skin	M Ž	197 203		202 184		102.5% 90.6%
C44	Koža, drugi mal. tumori Skin, other malignomas	M Ž	1644 1577		1337 1132		81.3% 71.8%
C45	Mezoteliom Mesothelioma	M Ž	17 0		5 0		29.4% 0.0%
C46	Kaposijev sarkom Kaposi's sarcoma	M Ž	2 3		1 2		50.0% 0.0%
C47	Periferni nervi i aut. ner. sis. Peripheral nerves & auton. nerv. sys.	M Ž	10 5		4 3		40.0% 60.0%
C48	Peritoneum i retroperitoneum Retroperitoneum & peritoneum	M Ž	22 26		21 20		95.5% 76.9%
C49	Vezivna i meka tkiva, drugi Other connective and soft tissue	M Ž	57 59		44 57		77.2% 96.6%
C50	Dojka Breast	M Ž	51 2869		50 2703		98.0% 94.2%

Tabela 22.1 Ukupan broj novoobolelih, broj i procenat histološki i citološki verifikovanih slučajeva raka prema primarnoj lokalizaciji i polu, centralna Srbija, 2008. godina (nastavak)

Table 22.1 Total number of new cancer cases, number and percentage of histologically and cytologically confirmed cancer cases by primary site and sex, Central Serbia 2008 (continued)

MKB-10 (ICD-10) Šifra (Code)	Primarna lokalizacija Primary site	POL (SEX) M (Male) Z(Female)	Ukupan broj novoobolelih		Broj histo. / cito. verifikovanih	
			All new cases		Number of cases histo./ cyto. confirmed	
			13261	11974	11521	86.9%
				11974	10449	87.3%
C51	Vulva	Ž	94	90	95.7%	
C52	Vagina	Ž	26	21	80.8%	
C53	Grlić materice Cervix uteri	Ž	945	899	95.1%	
C54	Materica, telo Corpus uteri	Ž	678	601	88.6%	
C55	Materica, neoznačeni deo Uterus, unspecified part	Ž	27	26	96.3%	
C56	Jajnik Ovary	Ž	458	457	99.8%	
C57	Ženski gen. org., dr. neoz. lok. Other & unspec. parts of fem. gen. org.	Ž	26	25	96.2%	
C58	Placenta	Ž	0	0	0.0%	
C60	Penis	M	29	23	79.3%	
C61	Prostata	M	1432	1382	96.5%	
C62	Testis	M	121	109	90.1%	
C63	Muški gen. org., dr. neoz. org. Other & unspec. male genital organs	M	10	9	0.0%	
C64	Bubreg	M	292	250	85.6%	
	Kidney, except renal pelvis	Ž	185	170	91.9%	
C65	Bubrežna karlica	M	28	25	89.3%	
	Renal pelvis	Ž	24	19	79.2%	
C66	Ureter	M	17	12	70.6%	
	Ureter	Ž	16	11	68.8%	
C67	Mokraćna bešika	M	804	692	86.1%	
	Bladder	Ž	266	215	80.8%	
C68	Urinarni organi, dr. neoz. org. Other & unspecified urinary organs	M	2	1	50.0%	
		Ž	0	0	0.0%	
C69	Oko, pripoji oka	M	29	20	69.0%	
	Eye and adnexa	Ž	23	20	87.0%	
C70	Moždance	M	16	11	68.8%	
	Meninges	Ž	22	15	68.2%	
C71	Mozak	M	289	285	98.6%	
	Brain	Ž	247	239	96.8%	
C72	Centralni ner. sis., dr. delovi Spinal cord, cran. nerv. & oth. parts of CNS	M	13	9	69.2%	
		Ž	12	7	58.3%	
C73	čitasta žlezda	M	38	35	92.1%	
	Thyroid gland	Ž	193	175	90.7%	
C74	Nadbubrežna žlezda	M	15	10	66.7%	
	Adrenal gland	Ž	16	8	50.0%	
C75	Endokrine žlezde, druge Oth. endoc. gl. & related structures	M	5	4	80.0%	
		Ž	12	10	83.3%	
C76	Ostale lokalizacije	M	41	38	92.7%	
	Other & ill defined sites	Ž	37	30	81.1%	
C77-C80	Sekundarne lok., bez ozn. lok. Unspec. mal. neo. of lymph nod. & without of spec. of site	M	276	210	76.1%	
		Ž	207	130	62.8%	
C81	Hodgkinova bolest	M	77	75	97.4%	
	Hodgkin's disease	Ž	72	68	94.4%	
C82	Ne-Hodgkinov lim., folikularni Follicular non-Hodgkin's lymphoma	M	18	16	88.9%	
		Ž	26	24	92.3%	
C83	Ne-Hodgkinov lim., difuzni Diffuse non-Hodgkin's lymphoma	M	46	43	93.5%	
		Ž	42	40	95.2%	
C84	Periferni i kožni lim. T-ćelija Peripheral & cutaneous T-cell lymphomas	M	6	5	83.3%	
		Ž	3	2	66.7%	
C85	Ne-Hodgkinovi limfomi, drugi Oth. & unspec. types of non-Hodgkin's lymphoma	M	101	90	89.1%	
		Ž	56	50	89.3%	
C88	Zloćudne imunoprolifer. bolesti Malignant immunoproliferative diseases	M	3	0	0.0%	
		Ž	1	0	0.0%	
C90	Mult. mijelom i zloć. tum. plaz. ćel. Multiple myeloma and malignant plasma cell neoplasms	M	57	56	98.2%	
		Ž	51	50	98.0%	
C91	Limfoidna leukemija Lymphoblastic, lymphoid leukaemia	M	110	109	99.1%	
		Ž	50	49	98.0%	
C92	Mijeloidna leukemija Myeloid leukaemia	M	71	70	98.6%	
		Ž	53	52	98.1%	
C93	Monocitna leukemija Monocytic leukaemia	M	1	1	100.0%	
		Ž	1	1	100.0%	
C94	Leukemije, druge Other leukaemias of specified cells	M	4	3	75.0%	
		Ž	0	0	0.0%	
C95	Leukemije, neoznačene Leukaemia, unspecified cell type	M	25	20	80.0%	
		Ž	13	11	84.6%	
C96	Dr. zloć. tum. hematop. sist. Oth. & unspec. mal. neo. of lymph., haematopoietic & relate	M	0	0	0.0%	
		Ž	3	2	66.7%	
C00-C96 (C44)	Sve lokalizacije, bez kože All sites but skin	M	11617	10184	87.7%	
		Ž	10397	9317	89.6%	

Tabela 23. Broj novoobolelih i incidencija od raka na 100.000 stanovnika prema primarnoj lokalizaciji, uzrastu i polu, centralna Srbija, 2008. godina

Table 23. Number of new cancer cases and cancer incidence rates per 100.000 population by primary site, age and sex, Central Serbia, 2008

MKB-10 (ICD-10) Šifra (Code)	Primarna lokalizacija Primary site	POL SEX M (Male) Z (Female)	Ukupno	Sirova incid.	Standardizovana incidencija (Stand. incidence)		
			(All)	Crude rate	ASR(E)	ASR(W)	TRUNC
			13261 11974	507.7 434.0	401.6 326.3	282.5 240.0	142.1 150.4
C00	Usna Lip	M Ž	75 33	2.9 1.2	2.2 0.8	1.5 0.5	0.7 0.2
C01	Jezik, koren Base of tongue	M Ž	30 12	1.1 0.4	0.9 0.4	0.7 0.3	0.4 0.2
C02	Jezik, drugi delovi Tongue, other & unspecified parts	M Ž	44 6	1.7 0.2	1.4 0.2	1.0 0.1	0.8 0.1
C03	Desni Gum	M Ž	5 1	0.2 0.0	0.1 0.0	0.1 0.0	0.1 0.0
C04	Pod usta Floor of mouth	M Ž	42 10	1.6 0.4	1.3 0.3	1.0 0.2	0.7 0.1
C05	Nepce Palate	M Ž	17 9	0.7 0.3	0.6 0.3	0.5 0.2	0.3 0.1
C06	Usta, drugi delovi Mouth, other & unspecified parts	M Ž	16 13	0.6 0.5	0.5 0.4	0.4 0.3	0.2 0.1
C07	Parotidna žlezda Parotid gland	M Ž	36 19	1.4 0.7	1.1 0.5	0.7 0.4	0.4 0.2
C08	Pljuvačna žlezda Other & unspec. major salivary gl.	M Ž	14 7	0.5 0.3	0.4 0.2	0.3 0.2	0.2 0.1
C09	Krajnik Tonsil	M Ž	29 12	1.1 0.4	0.9 0.3	0.7 0.2	0.5 0.1
C10	Orofarings Oropharynx	M Ž	26 6	1.0 0.2	0.9 0.2	0.7 0.1	0.4 0.1
C11	Nasofarings Nasopharynx	M Ž	15 14	0.6 0.5	0.5 0.4	0.4 0.4	0.2 0.2
C12	Piriformni sinus Pyriform sinus	M Ž	4 0	0.2 0.0	0.1 0.0	0.1 0.0	0.1 0.0
C13	Hipofarings Hypopharynx	M Ž	53 13	2.0 0.5	1.8 0.4	1.3 0.3	1.1 0.2
C14	Usne, usta, ždrelo, drugi delovi Other & ill def. sites in the lip oral cavity & pharynx	M Ž	12 6	0.5 0.2	0.4 0.1	0.3 0.1	0.1 0.1
C15	Jednjak Oesophagus	M Ž	117 48	4.5 1.7	3.7 1.3	2.7 1.0	1.8 0.7
C16	Želudac Stomach	M Ž	609 329	23.3 11.9	18.1 8.2	12.5 5.7	6.0 3.2
C17	Tanko crevo Small intestine	M Ž	28 31	1.1 1.1	0.8 0.8	0.6 0.6	0.3 0.3
C18	Debelo crevo Colon	M Ž	917 548	35.1 19.9	27.4 13.7	19.1 9.6	8.8 4.9
C19	Rektosigmoidni prelaz Rectosigmoid junction	M Ž	138 71	5.3 2.6	4.1 1.8	2.8 1.3	1.4 0.7
C20	Rektum Rectum	M Ž	852 430	32.6 15.6	25.5 10.7	17.6 7.5	8.6 3.8
C21	Anus i analni kanal Anus & anal canal	M Ž	25 17	1.0 0.6	0.8 0.5	0.6 0.4	0.3 0.2
C22	Jetra, žučni kanali Liver & intrahepatic bile ducts	M Ž	305 186	11.7 6.7	8.9 4.5	6.1 3.2	2.5 1.5
C23	Žučna kesica Gallbladder	M Ž	44 82	1.7 3.0	1.3 1.9	0.9 1.3	0.4 0.6
C24	Žučni kanali, drugi delovi Biliary tract, other & unspec. parts	M Ž	31 30	1.2 1.1	0.9 0.7	0.6 0.5	0.3 0.2
C25	Pankreas Pancreas	M Ž	356 234	13.6 8.5	10.6 5.5	7.3 3.7	3.6 1.7
C26	Org. za var., neodređ. lok. Other & ill-defined digestive organs	M Ž	24 23	0.9 0.8	0.7 0.6	0.5 0.4	0.3 0.3
C30	Nosna šupljina i srednje uvo Nasal cavity & middle ear	M Ž	11 16	0.4 0.6	0.3 0.3	0.2 0.2	0.1 0.1
C31	Nosni sinusi Accessory sinuses	M Ž	11 9	0.4 0.3	0.3 0.2	0.2 0.2	0.1 0.1
C32	Larings Larynx	M Ž	490 73	18.8 2.6	15.6 2.1	11.2 1.6	8.1 1.3
C33	Traheja Trachea	M Ž	7 4	0.3 0.1	0.2 0.1	0.2 0.1	0.1 0.1
C34	Bronh i pluća Bronchus & lung	M Ž	2821 965	108.0 35.0	86.9 26.1	61.4 18.8	37.3 12.8
C37	Timus Thymus	M Ž	4 2	0.2 0.1	0.1 0.1	0.1 0.1	0.1 0.0
C38	Srce, mediastinum, pleura Heart, mediastinum & pleura	M Ž	22 27	0.8 1.0	0.7 0.8	0.4 0.6	0.2 0.2
C39	Toraks, druge lokalizacije Other & ill-def. in the res. sys. & intrath. org.	M Ž	1 3	0.0 0.1	0.0 0.1	0.0 0.1	0.0 0.1
C40	Kosti i zglobovi hrskavice udova Bone & articular cartilage of limbs	M Ž	30 24	1.1 0.9	1.1 0.8	1.0 0.7	0.3 0.2
C41	Kosti i zglobovi hrskav., dr. lok. Bone & artic. cart. of other & unspec. parts	M Ž	24 30	0.9 1.1	0.8 0.9	0.6 0.7	0.3 0.4
C43	Koža, maligni melanom Malignant melanoma of skin	M Ž	197 203	7.5 7.4	6.3 6.0	4.7 4.7	2.9 3.0
C44	Koža, drugi mal. tumori Skin, other malignomas	M Ž	1644 1577	62.9 57.2	48.1 37.3	32.3 25.4	13.4 12.0
C45	Mezoteliom Mesothelioma	M Ž	17 0	0.7 0.0	0.5 0.0	0.4 0.0	0.3 0.0
C46	Kaposijev sarkom Kaposi's sarcoma	M Ž	2 3	0.1 0.1	0.1 0.1	0.0 0.1	0.0 0.0
C47	Periferni nervi i aut. ner. sis. Peripheral nerves & auton. nerv. sys.	M Ž	10 5	0.4 0.2	0.3 0.2	0.2 0.2	0.1 0.1
C48	Peritoneum i retroperitoneum Retroperitoneum & peritoneum	M Ž	22 26	0.8 0.9	0.7 0.6	0.5 0.4	0.3 0.2
C49	Vezivna i meka tkiva, drugi Other connective and soft tissue	M Ž	57 59	2.2 2.1	1.9 1.6	1.5 1.3	0.9 0.7
C50	Dojka Breast	M Ž	51 2869	2.0 104.0	1.5 82.3	1.0 61.1	0.4 44.6

Tabela 23.1 Broj novoobolelih i incidencija od raka na 100.000 stanovnika prema primarnoj lokalizaciji, uzrastu i polu, centralna Srbija, 2008. godina (nastavak)

Table 23.1 Number of new cancer cases and cancer incidence rates per 100.000 population by primary site, age and sex, Central Serbia, 2008 (continued)

MKB-10 (ICD-10) Šifra (Code)	Primarna lokalizacija Primary site	POL SEX M (Male) Z (Female)	Ukupno	Sirova acid.	Standardizovana incidencija (Stand. incidence)		
			(All)	Crude rate	ASR(E)	ASR(W)	TRUNC
			13261 11974	507.7 434.0	401.6 326.3	282.6 240.1	142.1 150.4
C51	Vulva Vulva	Ž	94	3.4	2.3	1.6	0.8
C52	Vagina Vagina	Ž	26	0.9	0.6	0.5	0.2
C53	Grlić materice Cervix uteri	Ž	945	34.3	29.9	23.3	17.9
C54	Materica, telo Corpus uteri	Ž	678	24.6	18.8	13.7	9.7
C55	Materica, neoznačeni deo Uterus, unspecified part	Ž	27	1.0	0.6	0.4	0.2
C56	Jajnik Ovary	Ž	458	16.6	13.6	10.6	6.6
C57	Ženski gen. org., dr. neoz. lok. Other & unspec. parts of fem. gen. org.	Ž	26	0.9	0.7	0.5	0.3
C58	Placenta Placenta	Ž	0	0.0	0.0	0.0	0.0
C60	Penis Penis	M	29	1.1	0.9	0.6	0.4
C61	Prostata Prostate	M	1432	54.8	40.1	25.9	7.2
C62	Testis Testis	M	121	4.6	4.6	4.5	1.7
C63	Muški gen. org., dr. neoz. org. Other & unspec. male genital organs	M	10	0.4	0.3	0.2	0.1
C64	Bubreg Kidney, except renal pelvis	M Ž	292 185	11.2 6.7	9.1 4.9	6.5 3.6	4.0 1.9
C65	Bubrežna karlica Renal pelvis	M Ž	28 24	1.1 0.9	0.9 0.7	0.6 0.5	0.4 0.3
C66	Ureter Ureter	M Ž	17 16	0.7 0.6	0.5 0.4	0.3 0.2	0.1 0.1
C67	Mokraćna bešika Bladder	M Ž	804 266	30.8 9.6	23.8 6.5	16.3 4.6	8.0 2.5
C68	Urinarni organi, dr. neoz. org. Other & unspecified urinary organs	M Ž	2 0	0.1 0.0	0.1 0.0	0.0 0.0	0.0 0.0
C69	Oko, pripoji oka Eye and adnexa	M Ž	29 23	1.1 0.8	0.9 0.7	0.7 0.6	0.3 0.3
C70	Moždance Meninges	M Ž	16 22	0.6 0.8	0.5 0.6	0.4 0.5	0.2 0.3
C71	Mozak Brain	M Ž	289 247	11.1 9.0	9.6 7.3	7.8 5.9	4.4 2.9
C72	Centralni ner. sis., dr. delovi Spinal cord, cran. nerv. & oth. parts of CNS	M Ž	13 12	0.5 0.4	0.4 0.4	0.3 0.3	0.2 0.2
C73	čitasta žlezda Thyroid gland	M Ž	38 193	1.5 7.0	1.3 6.0	1.0 4.8	0.8 3.4
C74	Nadbubrežna žlezda Adrenal gland	M Ž	15 16	0.6 0.6	0.5 0.5	0.5 0.3	0.2 0.2
C75	Endokrine žlezde, druge Oth. endoc. gl. & related structures	M Ž	5 12	0.2 0.4	0.1 0.4	0.1 0.3	0.1 0.1
C76	Ostale lokalizacije Other & ill defined sites	M Ž	41 37	1.6 1.3	1.2 0.9	0.8 0.7	0.4 0.3
C77-C80	Sekundarne lok., bez ozn. lok. Unspec. mal. neo. of lymph nod. & without of spec. of site	M Ž	276 207	10.6 7.5	8.5 5.4	6.2 3.9	2.9 2.1
C81	Hodgkinova bolest Hodgkin's disease	M Ž	77 72	2.9 2.6	2.7 2.4	2.6 2.2	0.8 0.8
C82	Ne-Hodgkinov lim., folikularni Follicular non-Hodgkin's lymphoma	M Ž	18 26	0.7 0.9	0.6 0.8	0.5 0.6	0.3 0.5
C83	Ne-Hodgkinov lim., difuzni Diffuse non-Hodgkin's lymphoma	M Ž	46 42	1.8 1.5	1.5 1.2	1.1 0.9	0.6 0.4
C84	Periferni i kožni lim. T-ćelija Peripheral & cutaneous T-cell lymphomas	M Ž	6 3	0.2 0.1	0.2 0.1	0.1 0.1	0.1 0.0
C85	Ne-Hodgkinovi limfomi, drugi Oth. & unspec. types of non-Hodgkin's lymphoma	M Ž	101 56	3.9 2.0	3.2 1.7	2.4 1.4	1.1 0.6
C88	Zloćudne imunoprolifer. bolesti Malignant immunoproliferative diseases	M Ž	3 1	0.1 0.0	0.1 0.0	0.1 0.0	0.0 0.0
C90	Mult. mijelom i zloć. tum. plaz. ćel. Multiple myeloma and malignant plasma cell neoplasms	M Ž	57 51	2.2 1.8	1.8 1.4	1.3 1.0	0.7 0.5
C91	Limfoidna leukemija Lymphoblastic, lymphoid leukaemia	M Ž	110 50	4.2 1.8	3.4 1.3	2.7 1.0	1.0 0.4
C92	Mijeloidna leukemija Myeloid leukaemia	M Ž	71 53	2.7 1.9	2.2 1.6	1.6 1.4	0.7 0.7
C93	Monocitna leukemija Monocytic leukaemia	M Ž	1 1	0.0 0.0	0.0 0.0	0.0 0.0	0.0 0.0
C94	Leukemije, druge Other leukaemias of specified cells	M Ž	4 0	0.2 0.0	0.1 0.0	0.1 0.0	0.1 0.0
C95	Leukemije, neoznačene Leukaemia, unspecified cell type	M Ž	25 13	1.0 0.5	0.8 0.3	0.6 0.3	0.3 0.1
C96	Dr. zloć. tum. hematop. sist. Oth. & unspec. mal. neo. of lymph., haematopoietic & relat	M Ž	0 3	0.0 0.1	0.0 0.1	0.0 0.1	0.0 0.1
C00-C96 (C44)	Sve lokalizacije, bez kože All sites but skin	M Ž	11617 10397	444.8 376.8	357.5 289.6	252.2 215.0	128.7 138.4

Tabela 24. Broj umrlih i mortalitet od raka na 100.000 stanovnika prema primarnoj lokalizaciji, uzrastu i polu, centralna Srbija, 2008. godina

Table 24. Number of death cancer cases and cancer mortality rates per 100.000 population by primary site, age and sex, Central Serbia, 2008

MKB-10 (ICD-10) Šifra (Code)	Primarna lokalizacija Primary site	POL SEX M (Male) Z (Female)	Ukupno	Sirovi mort.	Standardizovani mortalitet (Stand. mortality)		
			(All) 8338	Crude rate 319.2	ASR(E) 246.4	ASR(W) 167.6	TRUNC 79.7
			6317	229.0	155.4	107.7	57.9
C00	Usna	M	22	0.8	0.6	0.4	0.1
	Lip	Ž	3	0.1	0.1	0.0	0.0
C01	Jezik, koren	M	19	0.7	0.6	0.4	0.3
	Base of tongue	Ž	5	0.2	0.1	0.1	0.1
C02	Jezik, drugi delovi	M	33	1.3	1.0	0.8	0.6
	Tongue, other & unspecified parts	Ž	6	0.2	0.2	0.1	0.1
C03	Desni	M	1	0.0	0.0	0.0	0.0
	Gum	Ž	0	0.0	0.0	0.0	0.0
C04	Pod usta	M	15	0.6	0.5	0.3	0.3
	Floor of mouth	Ž	3	0.1	0.1	0.0	0.0
C05	Nepce	M	9	0.3	0.3	0.3	0.2
	Palate	Ž	2	0.1	0.0	0.0	0.0
C06	Usta, drugi delovi	M	5	0.2	0.2	0.1	0.1
	Mouth, other & unspecified parts	Ž	4	0.1	0.1	0.0	0.0
C07	Parotidna žlezda	M	15	0.6	0.4	0.3	0.1
	Parotid gland	Ž	8	0.3	0.2	0.1	0.0
C08	Pljučna žlezda	M	7	0.3	0.2	0.1	0.0
	Other & unspec. major salivary gl.	Ž	4	0.1	0.1	0.1	0.0
C09	Krajnik	M	17	0.7	0.5	0.4	0.2
	Tonsil	Ž	8	0.3	0.2	0.1	0.1
C10	Orofarings	M	22	0.8	0.7	0.5	0.3
	Oropharynx	Ž	4	0.1	0.1	0.1	0.1
C11	Nasofarings	M	8	0.3	0.2	0.2	0.1
	Nasopharynx	Ž	4	0.1	0.1	0.0	0.0
C12	Piriformni sinus	M	1	0.0	0.0	0.0	0.0
	Pyiform sinus	Ž	0	0.0	0.0	0.0	0.0
C13	Hipofarings	M	48	1.8	1.5	1.1	0.7
	Hypopharynx	Ž	11	0.4	0.3	0.2	0.2
C14	Usne, usta, ždrelo, drugi delovi	M	14	0.5	0.4	0.3	0.1
	Other & ill def. sites in the lip oral cavity & pharynx	Ž	6	0.2	0.1	0.1	0.1
C15	Jednjak	M	136	5.2	4.2	2.9	1.7
	Oesophagus	Ž	44	1.6	1.1	0.8	0.4
C16	Želudac	M	506	19.4	14.7	9.8	4.0
	Stomach	Ž	283	10.3	6.6	4.4	2.0
C17	Tanko crevo	M	17	0.7	0.5	0.4	0.1
	Small intestine	Ž	17	0.6	0.4	0.3	0.2
C18	Debelo crevo	M	533	20.4	15.3	10.1	4.0
	Colon	Ž	426	15.4	9.8	6.5	3.1
C19	Rektosigmoidni prelaz	M	34	1.3	1.0	0.6	0.2
	Rectosigmoid junction	Ž	32	1.2	0.7	0.5	0.2
C20	Rektum	M	428	16.4	12.5	8.3	3.7
	Rectum	Ž	295	10.7	6.7	4.4	1.9
C21	Anus i analni kanal	M	6	0.2	0.2	0.1	0.1
	Anus & anal canal	Ž	7	0.3	0.1	0.1	0.0
C22	Jetra, žučni kanali	M	327	12.5	9.6	6.5	3.0
	Liver & intrahepatic bile ducts	Ž	203	7.4	4.6	3.1	1.1
C23	Žučna kesica	M	37	1.4	1.0	0.7	0.2
	Gallbladder	Ž	87	3.2	1.9	1.3	0.5
C24	Žučni kanali, drugi delovi	M	36	1.4	1.0	0.7	0.3
	Biliary tract, other & unspec. parts	Ž	31	1.1	0.6	0.4	0.1
C25	Pankreas	M	426	16.3	12.4	8.3	3.5
	Pancreas	Ž	354	12.8	7.9	5.1	1.9
C26	Org. za var., neodrež. lok.	M	12	0.5	0.4	0.3	0.1
	Other & ill-defined digestive organs	Ž	24	0.9	0.5	0.3	0.1
C30	Nosna šupljina i srednje uvo	M	7	0.3	0.2	0.2	0.1
	Nasal cavity & middle ear	Ž	13	0.5	0.3	0.2	0.0
C31	Nosni sinusi	M	8	0.3	0.2	0.2	0.1
	Accessory sinuses	Ž	5	0.2	0.1	0.1	0.0
C32	Larings	M	267	10.2	8.0	5.5	3.0
	Larynx	Ž	38	1.4	1.0	0.7	0.4
C33	Traheja	M	10	0.4	0.3	0.2	0.2
	Trachea	Ž	3	0.1	0.1	0.0	0.0
C34	Bronh i pluća	M	2576	98.6	78.0	54.2	30.8
	Bronchus & lung	Ž	829	30.0	21.3	14.9	9.2
C37	Timus	M	1	0.0	0.0	0.0	0.0
	Thymus	Ž	2	0.1	0.1	0.0	0.0
C38	Srce, mediastinum, pleura	M	33	1.3	1.0	0.7	0.4
	Heart, mediastinum & pleura	Ž	22	0.8	0.6	0.4	0.2
C39	Toraks, druge lokalizacije	M	2	0.1	0.1	0.0	0.0
	Other & ill-def. in the res. sys. & intrath. org.	Ž	3	0.1	0.1	0.1	0.1
C40	Kosti i zglob. hrskavice udova	M	19	0.7	0.7	0.6	0.2
	Bone & articular cartilage of limbs	Ž	16	0.6	0.5	0.4	0.1
C41	Kosti i zglob. hrskav., dr. lok.	M	31	1.2	0.9	0.6	0.3
	Bone & artic. cart. of other & unspec. parts	Ž	18	0.7	0.5	0.4	0.2
C43	Koža, maligni melanom	M	123	4.7	3.8	2.7	1.4
	Malignant melanoma of skin	Ž	69	2.5	1.8	1.3	0.9
C44	Koža, drugi mal. tumori	M	60	2.3	1.7	1.1	0.3
	Skin, other malignomas	Ž	65	2.4	1.3	0.7	0.2
C45	Mezoteliom	M	18	0.7	0.5	0.4	0.2
	Mesothelioma	Ž	8	0.3	0.2	0.1	0.1
C46	Kaposijev sarkom	M	0	0.0	0.0	0.0	0.0
	Kaposi's sarcoma	Ž	4	0.1	0.1	0.1	0.0
C47	Periferni nervi i aut. ner. sis.	M	1	0.0	0.0	0.0	0.0
	Peripheral nerves & auton. nerv. sys.	Ž	4	0.1	0.1	0.1	0.1
C48	Peritoneum i retroperitoneum	M	30	1.1	0.9	0.6	0.3
	Retroperitoneum & peritoneum	Ž	32	1.2	0.8	0.6	0.3
C49	Vezivna i meka tkiva, drugi	M	25	1.0	0.9	0.7	0.3
	Other connective and soft tissue	Ž	18	0.7	0.5	0.4	0.3
C50	Dojka	M	24	0.9	0.7	0.5	0.2
	Breast	Ž	1121	40.6	28.7	20.3	12.3

Tabela 24.1 Broj umrlih i mortalitet od raka na 100.000 stanovnika prema primarnoj lokalizaciji, uzrastu i polu, centralna Srbija, 2008. godina (nastavak)

Table 24.1 Number of death cancer cases and cancer mortality rates per 100.000 population by primary site, age and sex, Central Serbia, 2008 (continued)

MKB-10 (ICD-10) Šifra (Code)	Primarna lokalizacija Primary site	POL SEX M (Male) Z (Female)	Ukupno	Sirovi mort.	Standardizovani mortalitet (Stand. mortality)		
			(All) 8338 6317	Crude rate 319.2 229.0	ASR(E) 246.4 155.4	ASR(W) 167.6 107.7	TRUNC 79.7 57.9
C51	Vulva Vulva	Ž	43	1.6	0.9	0.6	0.3
C52	Vagina Vagina	Ž	13	0.5	0.3	0.2	0.1
C53	Grlić materice Cervix uteri	Ž	389	14.1	10.9	8.0	5.9
C54	Materica, telo Corpus uteri	Ž	94	3.4	2.2	1.5	0.8
C55	Materica, neoznačeni deo Uterus, unspecified part	Ž	122	4.4	3.1	2.2	1.2
C56	Jajnik Ovary	Ž	282	10.2	7.5	5.4	3.1
C57	Ženski gen. org., dr. neoz. lok. Other & unspec. parts of fem. gen. org.	Ž	15	0.5	0.4	0.2	0.1
C58	Placenta Placenta	Ž	0	0.0	0.0	0.0	0.0
C60	Penis Penis	M	15	0.6	0.4	0.3	0.1
C61	Prostata Prostate	M	696	26.6	18.5	11.0	1.7
C62	Testis Testis	M	12	0.5	0.4	0.4	0.2
C63	Muški gen. org., dr. neoz. org. Other & unspec. male genital organs	M	4	0.2	0.1	0.1	0.0
C64	Bubreg Kidney, except renal pelvis	M	177	6.8	5.4	3.7	2.3
C65	Bubrežna karlica Renal pelvis	Ž	96	3.5	2.2	1.5	0.5
C66	Ureter Ureter	M	7	0.3	0.2	0.1	0.0
C67	Mokraćna bešika Bladder	M	291	11.1	8.1	5.1	1.5
C68	Urinarni organi, dr. neoz. org. Other & unspecified urinary organs	M	6	0.2	0.2	0.1	0.0
C69	Oko, pripoji oka Eye and adnexa	M	8	0.3	0.2	0.1	0.0
C70	Moždance Meninges	M	12	0.5	0.3	0.2	0.1
C71	Mozak Brain	M	255	9.8	8.2	6.3	3.4
C72	Centralni ner. sis., dr. delovi Spinal cord, cran. nerv. & oth. parts of CNS	M	8	0.3	0.3	0.2	0.2
C73	Čitasta žlezda Thyroid gland	M	16	0.6	0.5	0.3	0.2
C74	Nadbubrežna žlezda Adrenal gland	M	15	0.6	0.4	0.3	0.0
C75	Endokrine žlezde, druge Oth. endoc. gl. & related structures	M	7	0.3	0.2	0.1	0.0
C76	Ostale lokalizacije Other & ill defined sites	M	73	2.8	2.1	1.4	0.6
C77-C80	Sekundarne lok., bez ozn. lok. Unspec. mal. neo. of lymph nod. & without of spec. of site	M	311	11.9	9.1	6.2	2.8
C81	Hodgkinova bolest Hodgkin's disease	M	34	1.3	1.1	0.8	0.5
C82	Ne-Hodgkinov lim., folikularni Follicular non-Hodgkin's lymphoma	M	16	0.6	0.5	0.3	0.2
C83	Ne-Hodgkinov lim., difuzni Diffuse non-Hodgkin's lymphoma	M	30	1.1	0.9	0.6	0.3
C84	Periferni i kožni lim. T-ćelija Peripheral & cutaneous T-cell lymphomas	M	4	0.2	0.1	0.1	0.0
C85	Ne-Hodgkinovi limfomi, drugi Oth. & unspec. types of non-Hodgkin's lymphoma	M	79	3.0	2.5	1.9	0.8
C88	Zloćudne imunoprolifer. bolesti Malignant immunoproliferative diseases	M	1	0.0	0.0	0.0	0.0
C90	Mult. mijelom i zloć. tum. plaz. ćel. Multiple myeloma and malignant plasma cell neoplasms	M	65	2.5	1.9	1.3	0.7
C91	Limfoidna leukemija Lymphoblastic, lymphoid leukaemia	M	98	3.8	2.9	1.9	0.8
C92	Mijeloidna leukemija Myeloid leukaemia	M	68	2.5	1.6	1.1	0.4
C93	Monocitna leukemija Monocytic leukaemia	M	91	3.5	2.7	1.9	0.8
C94	Leukemije, druge Other leukaemias of specified cells	M	76	2.8	2.1	1.5	1.1
C95	Leukemije, neoznačene Leukaemia, unspecified cell type	M	13	0.5	0.4	0.3	0.2
C96	Dr. zloć. tum. hematop. sist. Oth. & unspec. mal. neo. of lymph., haematopoietic & related tissu	M	13	0.5	0.3	0.2	0.1
C00-C96 (C44)	Sve lokalizacije, bez kože All sites but skin	M	4	0.2	0.1	0.1	0.0
		Ž	2	0.1	0.0	0.0	0.0
			8278	316.9	244.7	166.6	79.5
			6252	226.6	154.2	107.0	57.7

ISSN 1452-0915



9 771452 091007